

PROM1 Antibody

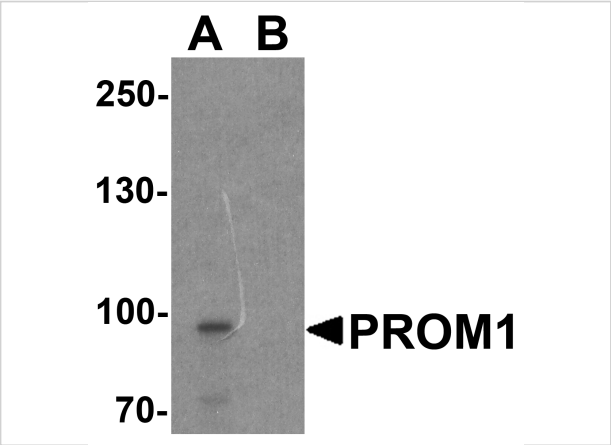
CATALOG NUMBER: 7783

Specifications

Host Species	Rabbit
Species Reactivity	Human, Mouse, Rat
Immunogen	PROM1 antibody was raised against an 18 amino acid peptide near the carboxy terminus of human PROM1. The immunogen is located within the last 50 amino acids of PROM1.
Conjugate	Unconjugated
Tested Applications	ELISA, ICC, IF, WB
User Note	Optimal dilutions for each application to be determined by the researcher.
Specificity	PROM1 antibody is human, mouse and rat reactive. Multiple isoforms of PROM1 are known to exist.
Predicted Molecular Weight	Predicted: 95 kDa Observed: 97 kDa

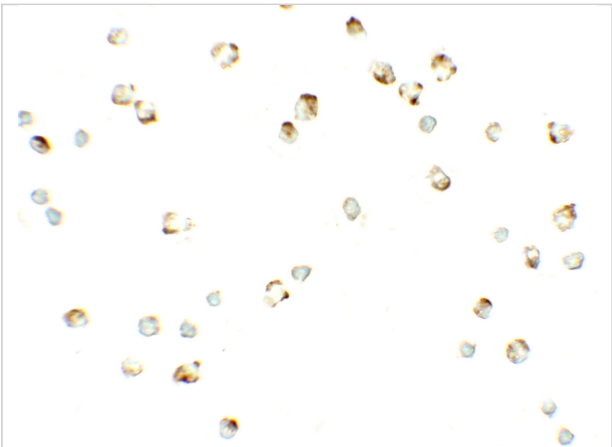
Properties

Purification	PROM1 antibody is affinity chromatography purified via peptide column.
Clonality	Polyclonal
Isotype	IgG
Physical State	Liquid
Buffer	PROM1 Antibody is supplied in PBS containing 0.02% sodium azide.
Concentration	1 mg/mL
Storage Conditions	PROM1 antibody can be stored at 4°C up to one year. Antibodies should not be exposed to prolonged high temperatures.



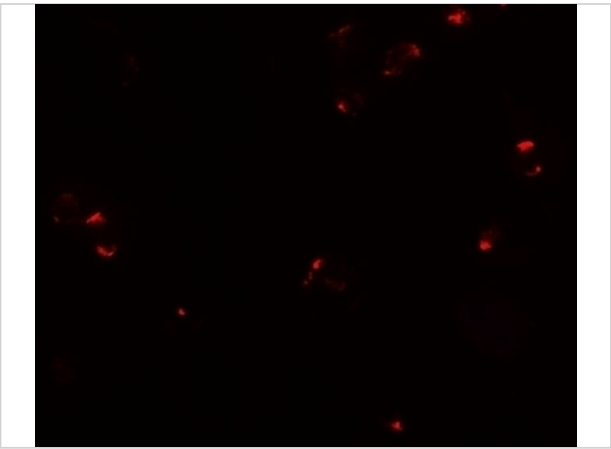
PROM1 Antibody 1

Western blot analysis of PROM1 in Jurkat cell lysate with PROM1 antibody at 1 µg/ml in (A) the absence and (B) the presence of blocking peptide.



PROM1 Antibody 2

Immunocytochemistry of PROM1 in Jurkat cells with PROM1 antibody at 2.5 µg/mL.



PROM1 Antibody 3

Immunofluorescence of PROM1 in Jurkat cells with PROM1 antibody at 20 µg/mL.

Disclaimer

Disclaimer	Optimal dilutions/concentrations should be determined by the end user. The information provided is a guideline for product use. This product is for research use only.
------------	--

For research use only. For additional information, visit ProSci's [Terms and Conditions Page](#).