

## ATMIN Antibody

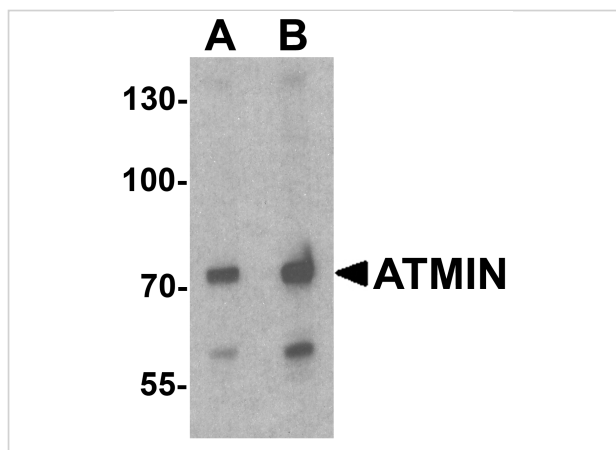
CATALOG NUMBER: 7777

### Specifications

Host Species	Rabbit
Species Reactivity	Human, Mouse, Rat
Immunogen	ATMIN antibody was raised against a 19 amino acid peptide near the amino terminus of human ATMIN. The immunogen is located within amino acids 200 - 250 of ATMIN.
Conjugate	Unconjugated
Tested Applications	ELISA, ICC, IF, WB
User Note	Optimal dilutions for each application to be determined by the researcher.
Specificity	ATMIN antibody is human, mouse and rat reactive. At least three isoforms of ATMIN are known to exist.
Predicted Molecular Weight	Predicted: 73, 79, 91 kDa Observed: 72 kDa

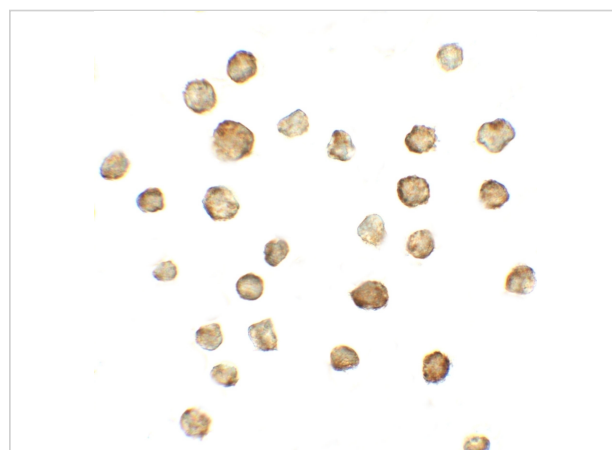
### Properties

Purification	ATMIN antibody is affinity chromatography purified via peptide column.
Clonality	Polyclonal
Isotype	IgG
Physical State	Liquid
Buffer	ATMIN Antibody is supplied in PBS containing 0.02% sodium azide.
Concentration	1 mg/mL
Storage Conditions	ATMIN antibody can be stored at 4°C for three months and -20°C, stable for up to one year.



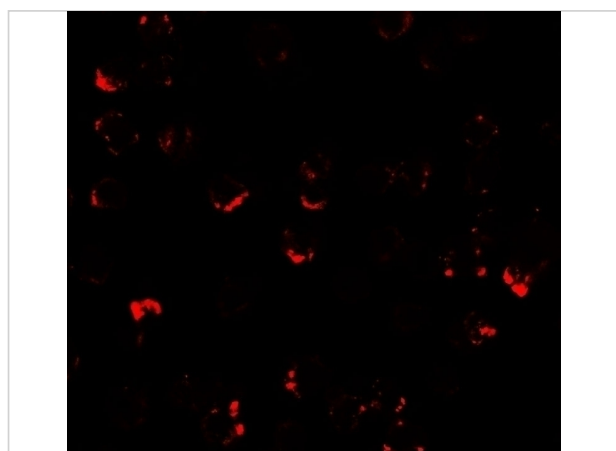
### ATMIN Antibody 1

Western blot analysis of ATMIN in 293 cell lysate with ATMIN antibody at (A) 1 and (B) 2  $\mu\text{g}/\text{mL}$ .



### ATMIN Antibody 2

Immunocytochemistry of ATMIN in A431 cells with ATMIN antibody at 5  $\mu\text{g}/\text{mL}$ .



### ATMIN Antibody 3

Immunofluorescence of ATMIN in A431 cells with ATMIN antibody at 2.5  $\mu\text{g}/\text{mL}$ .

## Disclaimer

#### Disclaimer

Optimal dilutions/concentrations should be determined by the end user. The information provided is a guideline for product use. This product is for research use only.

For research use only. For additional information, visit ProSci's [Terms and Conditions Page](#).