

## TANK Antibody

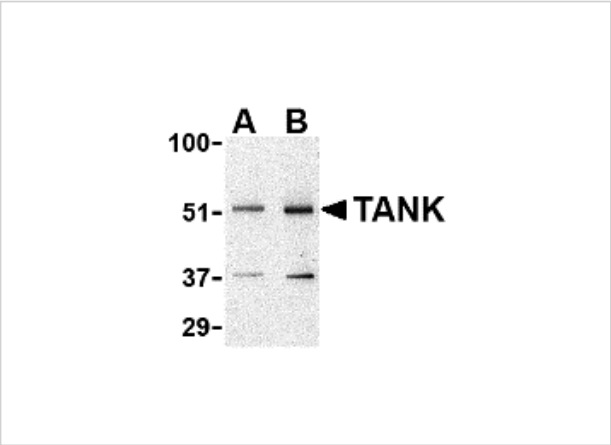
CATALOG NUMBER: 3879

### Specifications

Host Species	Rabbit
Species Reactivity	Human
Homology	Predicted species reactivity based on immunogen sequence: Mouse: (79%)
Immunogen	TANK antibody was raised against a 14 amino acid synthetic peptide from near the amino terminus of human TANK. The immunogen is located within amino acids 60 - 110 of TANK.
Conjugate	Unconjugated
Tested Applications	ELISA, ICC, WB
User Note	Optimal dilutions for each application to be determined by the researcher.

### Properties

Purification	TANK Antibody is affinity chromatography purified via peptide column.
Clonality	Polyclonal
Isotype	IgG
Physical State	Liquid
Buffer	TANK Antibody is supplied in PBS containing 0.02% sodium azide.
Concentration	1 mg/mL
Storage Conditions	TANK antibody can be stored at 4°C for three months and -20°C, stable for up to one year. As with all antibodies care should be taken to avoid repeated freeze thaw cycles. Antibodies should not be exposed to prolonged high temperatures.



TANK Antibody 1

Western blot analysis of TANK in Daudi cell lysate with TANK antibody at (A) 0.5 and (B) 1 µg/mL.



TANK Antibody 2

Immunocytochemistry of TANK in Daudi cells with TANK antibody at 2.5 µg/mL.

Disclaimer

Disclaimer	Optimal dilutions/concentrations should be determined by the end user. The information provided is a guideline for product use. This product is for research use only.
------------	--

For research use only. For additional information, visit ProSci's [Terms and Conditions Page](#).