

SMURF2 Antibody

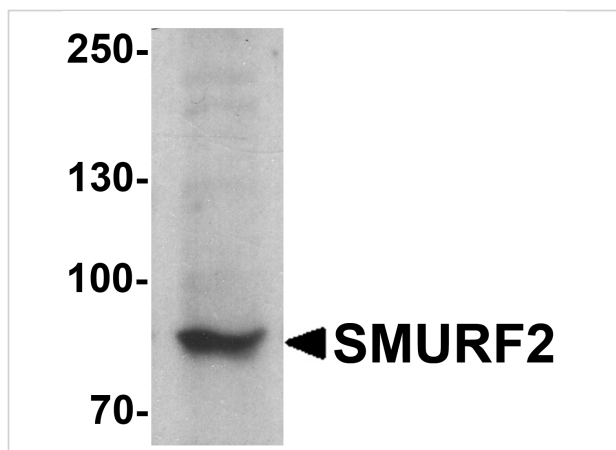
CATALOG NUMBER: 7773

Specifications

Host Species	Rabbit
Species Reactivity	Human, Mouse, Rat
Immunogen	SMURF2 antibody was raised against a 17 amino acid peptide near the amino terminus of human SMURF2. The immunogen is located within amino acids 140 - 190 of SMURF2.
Conjugate	Unconjugated
Tested Applications	ELISA, IF, IHC-P, WB
User Note	Optimal dilutions for each application to be determined by the researcher.
Specificity	SMURF2 antibody is human, mouse and rat reactive. SMURF2 is predicted to not cross-react with SMURF1.
Predicted Molecular Weight	Predicted: 82 kDa Observed: 85 kDa

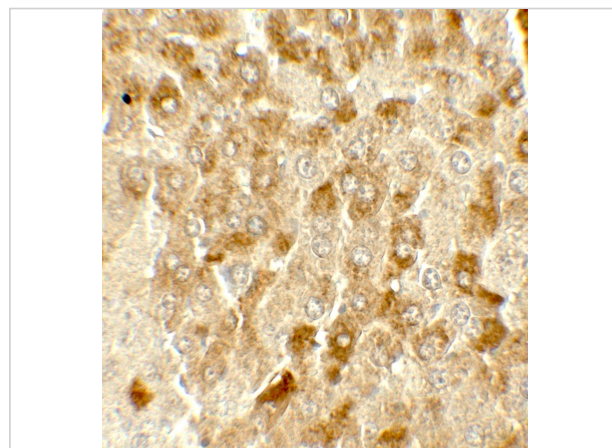
Properties

Purification	SMURF2 antibody is affinity chromatography purified via peptide column.
Clonality	Polyclonal
Isotype	IgG
Physical State	Liquid
Buffer	SMURF2 Antibody is supplied in PBS containing 0.02% sodium azide.
Concentration	1 mg/mL
Storage Conditions	SMURF2 antibody can be stored at 4°C for three months and -20°C, stable for up to one year.



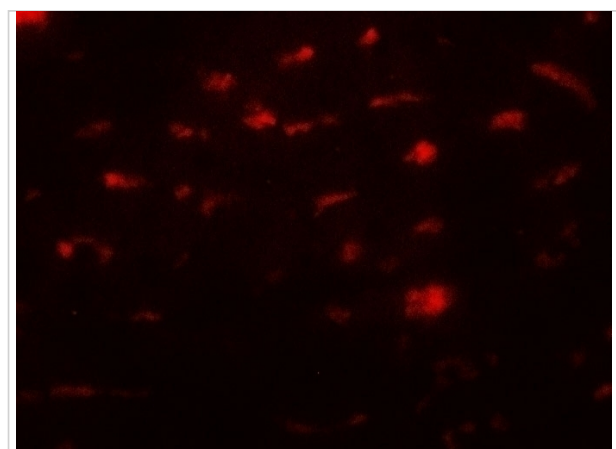
SMURF2 Antibody 1

Western blot analysis of SMURF2 in C2C12 cell lysate with SMURF2 antibody at 1 µg/ml.



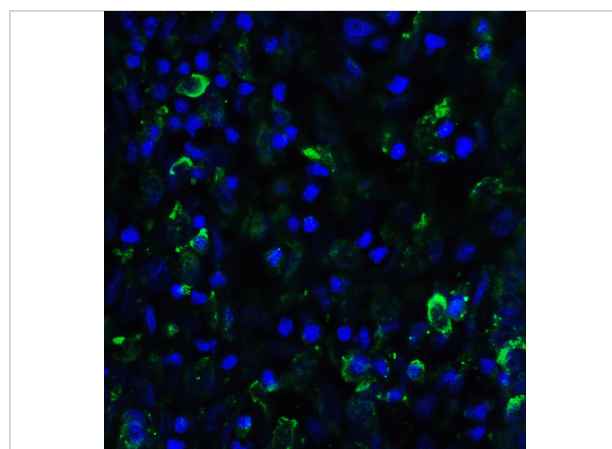
SMURF2 Antibody 2

Immunohistochemistry of SMURF2 in mouse liver tissue with SMURF2 antibody at 5 µg/mL.



SMURF2 Antibody 3

Immunofluorescence of SMURF2 in mouse liver tissue with SMURF2 antibody at 20 µg/mL.



SMURF2 Antibody 4

Immunofluorescence of SMURF2 in human uterus tissue with SMURF2 antibody at 20 µg/mL.

Green: SMURF2 Antibody (7773)
Blue: DAPI staining

Disclaimer

Disclaimer

Optimal dilutions/concentrations should be determined by the end user. The information provided is a guideline for product use. This product is for research use only.

For research use only. For additional information, visit ProSci's [Terms and Conditions Page](#).