

USP25 Antibody

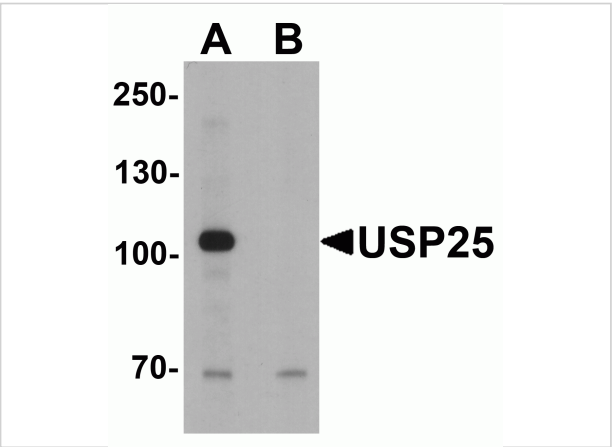
CATALOG NUMBER: 7765

Specifications

Host Species	Rabbit
Species Reactivity	Human, Mouse
Immunogen	USP25 antibody was raised against a 17 amino acid peptide near the center of human USP25. The immunogen is located within amino acids 470 - 520 of USP25.
Conjugate	Unconjugated
Tested Applications	ELISA, IF, IHC-P, WB
User Note	Optimal dilutions for each application to be determined by the researcher.
Specificity	USP25 antibody is human and mouse reactive. Multiple isoforms of USP25 are known to exist.
Predicted Molecular Weight	Predicted: 116 kDa Observed: 105 kDa

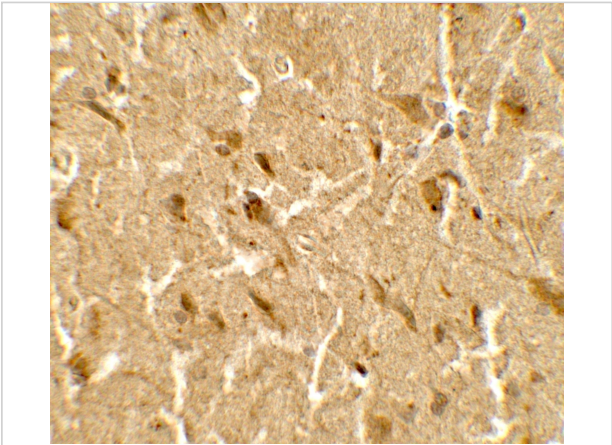
Properties

Purification	USP25 antibody is affinity chromatography purified via peptide column.
Clonality	Polyclonal
Isotype	IgG
Physical State	Liquid
Buffer	USP25 Antibody is supplied in PBS containing 0.02% sodium azide.
Concentration	1 mg/mL
Storage Conditions	USP25 antibody can be stored at 4°C for three months and -20°C, stable for up to one year.



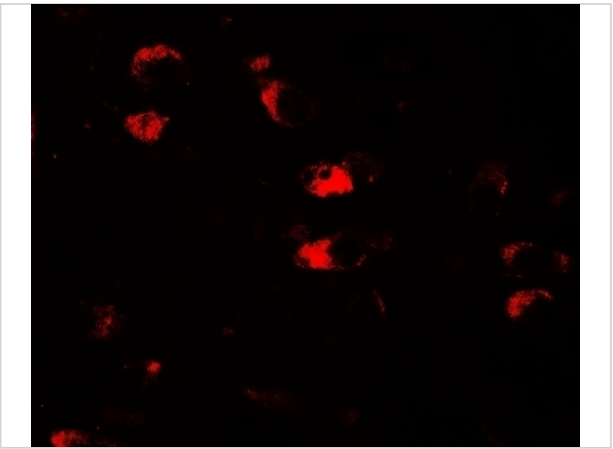
USP25 Antibody 1

Western blot analysis of USP25 in mouse brain tissue lysate with USP25 antibody at 1 µg/ml in (A) the absence and (B) the presence of blocking peptide.



USP25 Antibody 2

Immunohistochemistry of USP25 in human brain tissue with USP25 antibody at 5 µg/mL.



USP25 Antibody 3

Immunofluorescence of USP25 in human brain tissue with USP25 antibody at 20 µg/mL.

Disclaimer

Disclaimer	Optimal dilutions/concentrations should be determined by the end user. The information provided is a guideline for product use. This product is for research use only.
------------	--

For research use only. For additional information, visit ProSci's [Terms and Conditions Page](#).