

## TANK Antibody

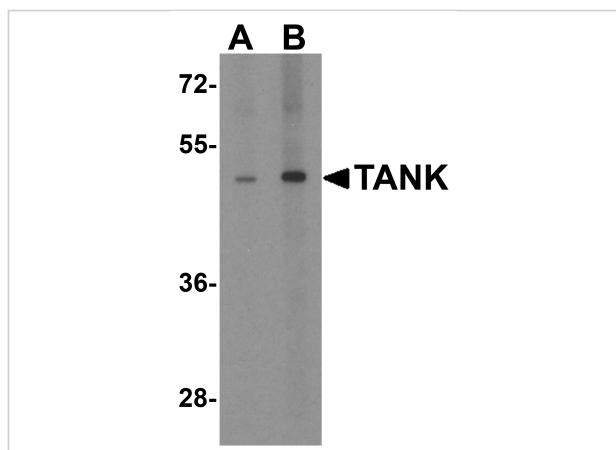
CATALOG NUMBER: 3877

### Specifications

|                            |                                                                                                                                                                                    |
|----------------------------|------------------------------------------------------------------------------------------------------------------------------------------------------------------------------------|
| Host Species               | Rabbit                                                                                                                                                                             |
| Species Reactivity         | Human, Mouse, Rat                                                                                                                                                                  |
| Immunogen                  | TANK antibody was raised against a 14 amino acid synthetic peptide from near the carboxy terminus of human TANK.<br>The immunogen is located within amino acids 350 - 400 of TANK. |
| Conjugate                  | Unconjugated                                                                                                                                                                       |
| Tested Applications        | ELISA, IF, IHC-P, WB                                                                                                                                                               |
| User Note                  | Optimal dilutions for each application to be determined by the researcher.                                                                                                         |
| Predicted Molecular Weight | Predicted: 47 kDa<br>Observed: 50 kDa                                                                                                                                              |

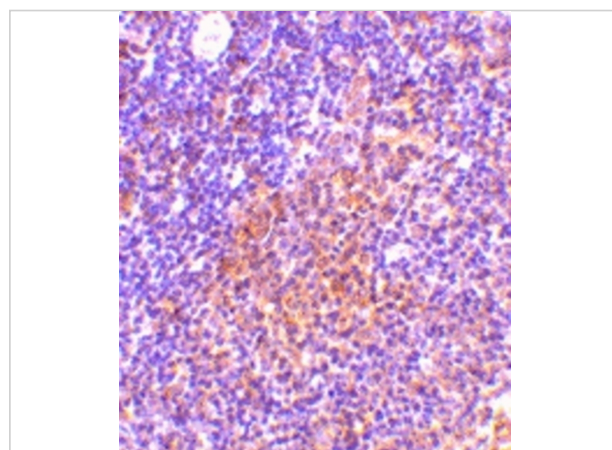
### Properties

|                    |                                                                                                                                                                                                                                                    |
|--------------------|----------------------------------------------------------------------------------------------------------------------------------------------------------------------------------------------------------------------------------------------------|
| Purification       | TANK Antibody is affinity chromatography purified via peptide column.                                                                                                                                                                              |
| Clonality          | Polyclonal                                                                                                                                                                                                                                         |
| Isotype            | IgG                                                                                                                                                                                                                                                |
| Physical State     | Liquid                                                                                                                                                                                                                                             |
| Buffer             | TANK Antibody is supplied in PBS containing 0.02% sodium azide.                                                                                                                                                                                    |
| Concentration      | 1 mg/mL                                                                                                                                                                                                                                            |
| Storage Conditions | TANK antibody can be stored at 4°C for three months and -20°C, stable for up to one year.<br>As with all antibodies care should be taken to avoid repeated freeze thaw cycles.<br>Antibodies should not be exposed to prolonged high temperatures. |



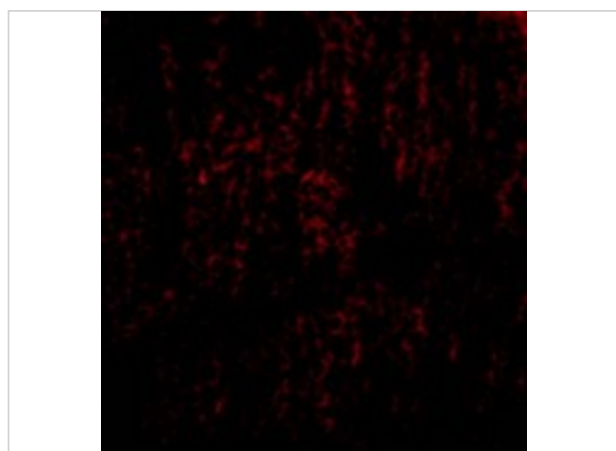
### TANK Antibody 1

Western blot analysis of TANK in human kidney tissue lysate with TANK antibody at (A) 1 and (B) 2  $\mu\text{g/mL}$ .



### TANK Antibody 2

Immunohistochemistry of TANK in rat spleen tissue with TANK antibody at 10  $\mu\text{g/mL}$ .



### TANK Antibody 3

Immunofluorescence of TANK in Rat Spleen cells with TANK antibody at 20  $\mu\text{g/mL}$ .

## Disclaimer

#### Disclaimer

Optimal dilutions/concentrations should be determined by the end user. The information provided is a guideline for product use. This product is for research use only.

For research use only. For additional information, visit ProSci's [Terms and Conditions Page](#).