

## OLIG2 Antibody

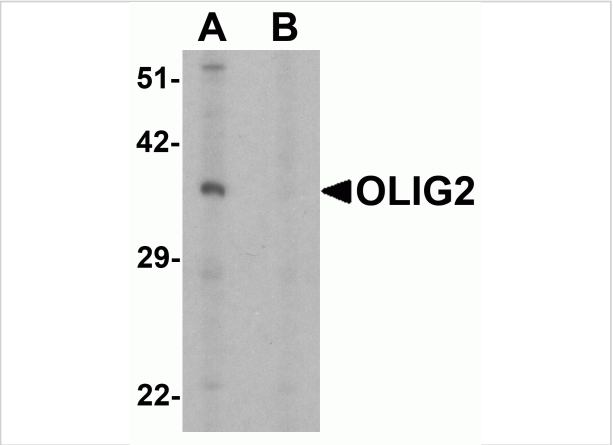
CATALOG NUMBER: 7743

### Specifications

Host Species	Rabbit
Species Reactivity	Human, Mouse, Rat
Homology	Predicted species reactivity based on immunogen sequence: Chicken: (100%)
Immunogen	OLIG2 antibody was raised against a 15 amino acid peptide near the amino terminus of human OLIG2. The immunogen is located within amino acids 80 - 130 of OLIG2.
Conjugate	Unconjugated
Tested Applications	ELISA, IF, IHC-P, WB
User Note	Optimal dilutions for each application to be determined by the researcher.
Specificity	OLIG2 antibody is human, mouse and rat reactive. It is predicted to not cross-react with other members of the OLIG family of proteins. At least three isoforms of OLIG2 are known to exist; this antibody will detect all three isoforms.
Predicted Molecular Weight	Predicted: 36 kDa Observed: 37 kDa

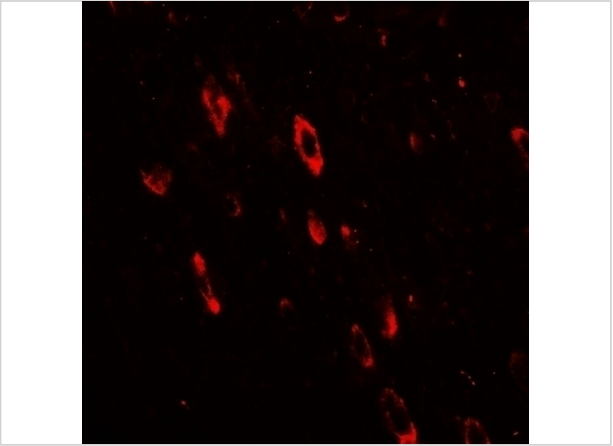
### Properties

Purification	OLIG2 antibody is affinity chromatography purified via peptide column.
Clonality	Polyclonal
Isotype	IgG
Physical State	Liquid
Buffer	OLIG2 Antibody is supplied in PBS containing 0.02% sodium azide.
Concentration	1 mg/mL
Storage Conditions	OLIG2 antibody can be stored at 4°C for three months and -20°C, stable for up to one year.



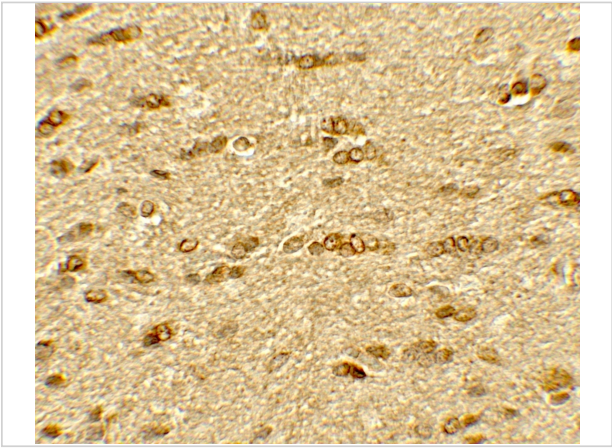
OLIG2 Antibody 1

Western blot analysis of OLIG2 in EL4 cell lysate with OLIG2 antibody at 1 µg/ml in (A) the absence and (B) the presence of blocking peptide.



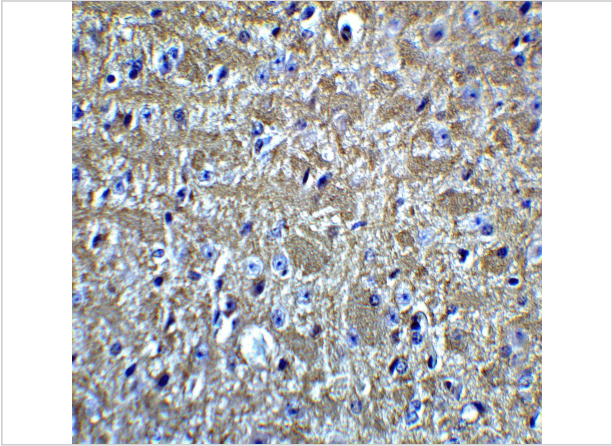
OLIG2 Antibody 3

Immunofluorescence of OLIG2 in rat brain tissue with OLIG2 antibody at 20 µg/mL.



OLIG2 Antibody 2

Immunohistochemistry of OLIG2 in rat brain tissue with OLIG2 antibody at 5 µg/mL.



OLIG2 Antibody 4

Immunohistochemistry of OLIG2 in mouse brain tissue with OLIG2 Antibody at 5 µg/mL.

Disclaimer

Disclaimer	Optimal dilutions/concentrations should be determined by the end user. The information provided is a guideline for product use. This product is for research use only.
------------	--

For research use only. For additional information, visit ProSci's [Terms and Conditions Page](#).