

## TET1 Antibody

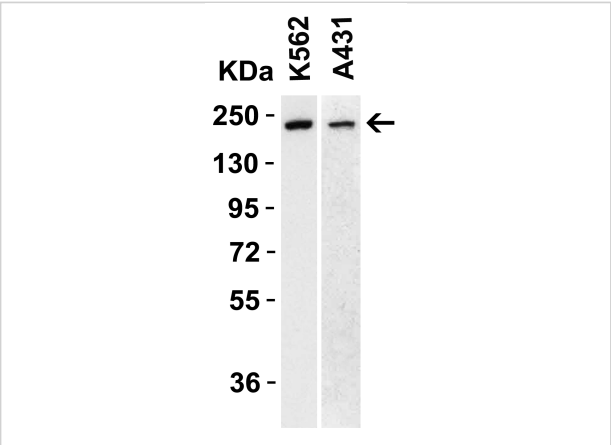
CATALOG NUMBER: 7733

### Specifications

Host Species	Rabbit
Species Reactivity	Human, Mouse, Rat
Homology	Predicted species reactivity based on immunogen sequence: Bovine: (94%), Pig: (88%)
Immunogen	Anti-TET1 antibody ( <b>7733</b> ) was raised against an 18 amino acid peptide near the carboxy terminus of human TET1. The immunogen is located within amino acids 2030 - 2080 of TET1.
Conjugate	Unconjugated
Tested Applications	ELISA, IF, IHC-P, WB
User Note	Optimal dilutions for each application to be determined by the researcher.
Specificity	TET1 antibody is human, mouse and rat reactive. This antibody is predicted to not cross-react with TET2 and TET3.
Predicted Molecular Weight	Predicted: 235 kDa Observed: 235 kDa

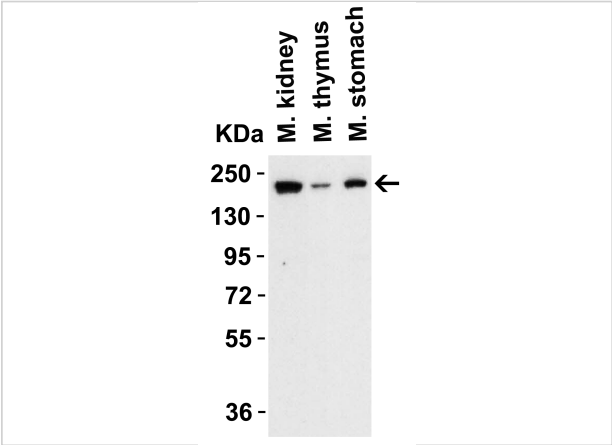
### Properties

Purification	TET1 antibody is affinity chromatography purified via peptide column.
Clonality	Polyclonal
Isotype	IgG
Physical State	Liquid
Buffer	TET1 Antibody is supplied in PBS containing 0.02% sodium azide.
Concentration	1 mg/mL
Storage Conditions	TET1 antibody can be stored at 4°C for three months and -20°C, stable for up to one year.



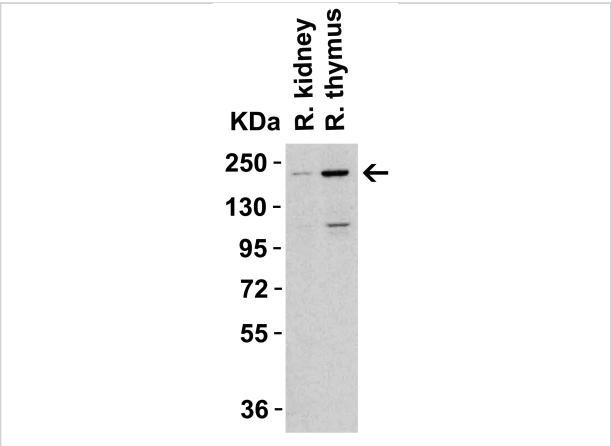
### TET1 Antibody 1

**Figure 1 WB Validation of TET1 in Human Cell Lines**  
 Loading: 15 µg of lysate Antibodies: TET1 7733, 1 µg/mL, 1 h incubation at RT in 5% NFDm/TBST. Secondary: Goat Anti-Rabbit...



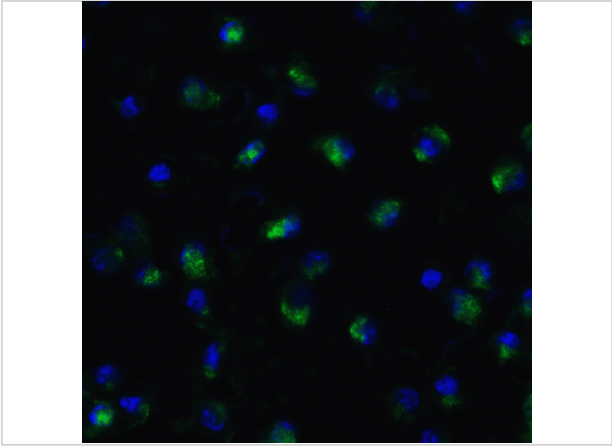
### TET1 Antibody 2

**Figure 2 WB Validation of TET1 in Mouse Tissues**  
 Loading: 15 µg of lysate Antibodies: TET1 7733, 1 µg/mL, 1 h incubation at RT in 5% NFDm/TBST. Secondary: Goat Anti-Rabbit ...



### TET1 Antibody 3

**Figure 3 WB Validation of TET1 in Rat Tissues**  
 Loading: 15 µg of lysate Antibodies: TET1 7733, 1 µg/mL, 1 h incubation at RT in 5% NFDm/TBST. Secondary: Goat Anti-Rabbit IgG ...



### TET1 Antibody 4

**Figure 4 Immunofluorescence Validation of TET1 in HeLa Cells**  
 Immunofluorescent analysis of 4% paraformaldehyde-fixed HeLa cells labeling TET1 with 7733 at 20 µg/mL, followed by...

## Disclaimer

Disclaimer	Optimal dilutions/concentrations should be determined by the end user. The information provided is a guideline for product use. This product is for research use only.
------------	--

For research use only. For additional information, visit ProSci's [Terms and Conditions Page](#).