

TERF2 Antibody

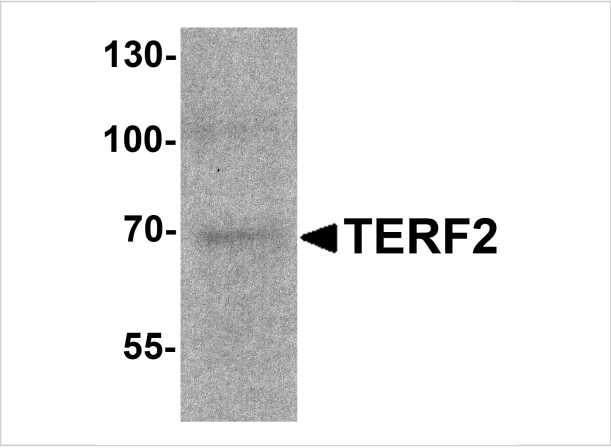
CATALOG NUMBER: 7727

Specifications

Host Species	Rabbit
Species Reactivity	Human
Homology	Predicted species reactivity based on immunogen sequence: Mouse: (92%)
Immunogen	TERF2 antibody was raised against a 17 amino acid peptide near the amino terminus of human TERF2. The immunogen is located within the first 50 amino acids of TERF2.
Conjugate	Unconjugated
Tested Applications	ELISA, IHC-P, WB
User Note	Optimal dilutions for each application to be determined by the researcher.
Specificity	TERF2 antibody is human specific.
Predicted Molecular Weight	Predicted: 60 kDa Observed: 69 kDa

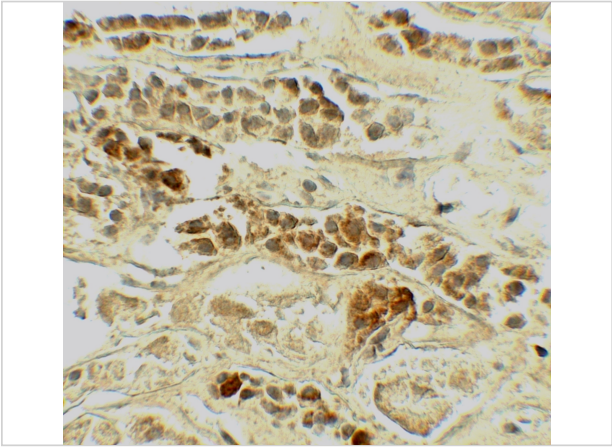
Properties

Purification	TERF2 antibody is affinity chromatography purified via peptide column.
Clonality	Polyclonal
Isotype	IgG
Physical State	Liquid
Buffer	TERF2 Antibody is supplied in PBS containing 0.02% sodium azide.
Concentration	1 mg/mL
Storage Conditions	TERF2 antibody can be stored at 4°C for three months and -20°C, stable for up to one year.



TERF2 Antibody 1

Western blot analysis of TERF2 in 293 cell lysate with TERF2 antibody at 1 µg/ml.



TERF2 Antibody 2

Immunohistochemistry of TERF2 in human kidney tissue with TERF2 antibody at 5 µg/mL.

Disclaimer

Disclaimer	Optimal dilutions/concentrations should be determined by the end user. The information provided is a guideline for product use. This product is for research use only.
------------	--

For research use only. For additional information, visit ProSci's [Terms and Conditions Page](#).