

BAG-1 Antibody

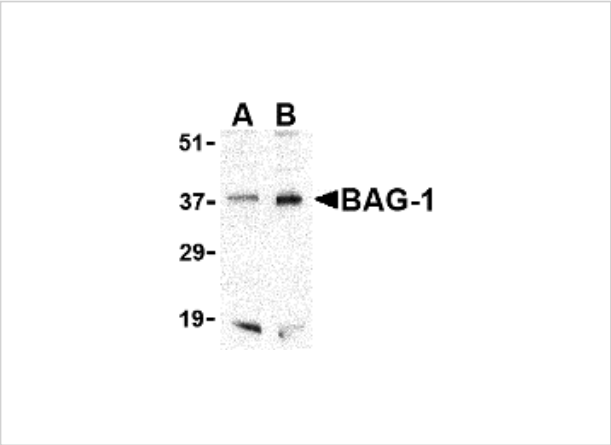
CATALOG NUMBER: 3869

Specifications

Host Species	Rabbit
Species Reactivity	Human, Mouse, Rat
Immunogen	BAG-1 antibody was raised against a 14 amino acid synthetic peptide from near the carboxy terminus of human BAG-1. The immunogen is located within the last 50 amino acids of BAG-1.
Conjugate	Unconjugated
Tested Applications	ELISA, IF, IHC-P, WB
User Note	Optimal dilutions for each application to be determined by the researcher.

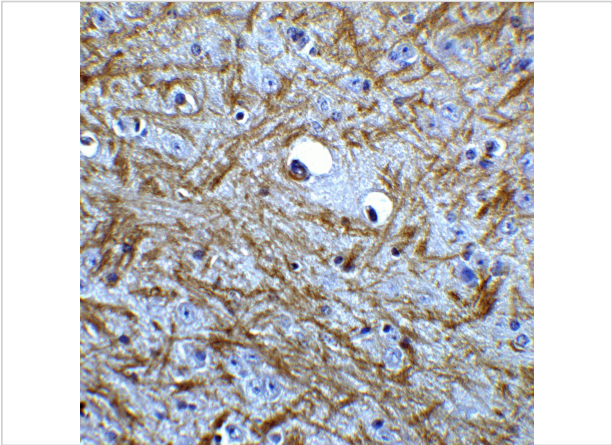
Properties

Purification	BAG-1 Antibody is affinity chromatography purified via peptide column.
Clonality	Polyclonal
Isotype	IgG
Physical State	Liquid
Buffer	BAG-1 Antibody is supplied in PBS containing 0.02% sodium azide.
Concentration	1 mg/mL
Storage Conditions	BAG-1 antibody can be stored at 4°C for three months and -20°C, stable for up to one year. As with all antibodies care should be taken to avoid repeated freeze thaw cycles. Antibodies should not be exposed to prolonged high temperatures.



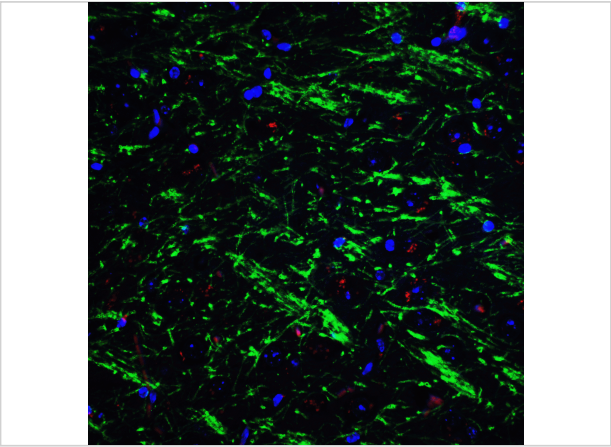
BAG-1 Antibody 1

Western blot analysis of BAG-1 in PC-3 cell lysate with BAG-1 antibody at (A) 1 and (B) 2 µg/mL.



BAG-1 Antibody 2

Immunohistochemistry of BAG 1 in mouse brain tissue with BAG 1 Antibody at 5 µg/mL.



BAG-1 Antibody 3

Immunofluorescence of BAG 1 in mouse brain tissue with BAG 1 Antibody at 20 µg/mL.

Green: BAG 1 antibody (3869)
Red: Phylloidin staining
Blue: DAPI staining

Disclaimer

Disclaimer	Optimal dilutions/concentrations should be determined by the end user. The information provided is a guideline for product use. This product is for research use only.
-------------------	--

For research use only. For additional information, visit ProSci's [Terms and Conditions Page](#).