

ARF6 Antibody

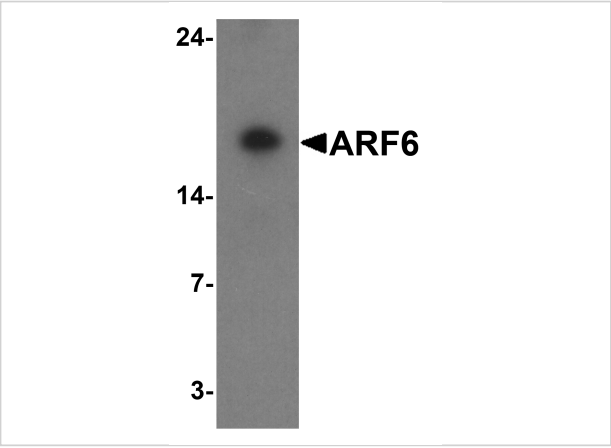
CATALOG NUMBER: 7699

Specifications

Host Species	Rabbit
Species Reactivity	Human, Mouse, Rat
Homology	Predicted species reactivity based on immunogen sequence: Pig: (100%), Chicken: (100%)
Immunogen	ARF6 antibody was raised against a 19 amino acid peptide near the carboxy terminus of human ARF6. The immunogen is located within the last 50 amino acids of ARF6.
Conjugate	Unconjugated
Tested Applications	ELISA, IF, IHC-P, WB
User Note	Optimal dilutions for each application to be determined by the researcher.
Specificity	ARF6 antibody is human, mouse and rat reactive.
Predicted Molecular Weight	Predicted: 19 kDa Observed: 18 kDa

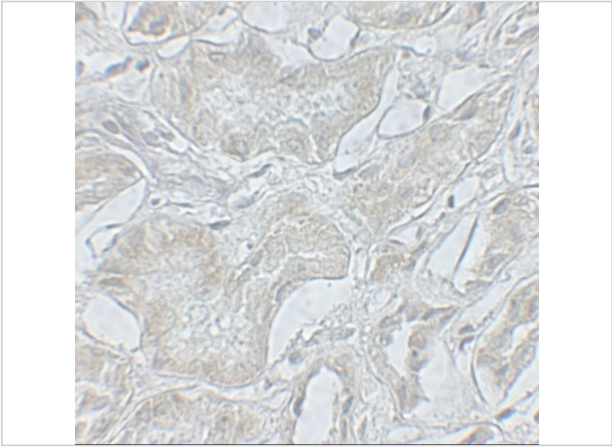
Properties

Purification	ARF6 antibody is affinity chromatography purified via peptide column.
Clonality	Polyclonal
Isotype	IgG
Physical State	Liquid
Buffer	ARF6 antibody is supplied in PBS containing 0.02% sodium azide.
Concentration	1 mg/mL
Storage Conditions	ARF6 antibody can be stored at 4°C for three months and -20°C, stable for up to one year.



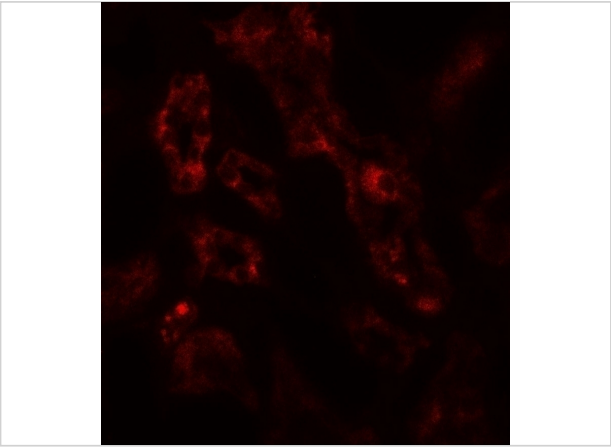
ARF6 Antibody 1

Western blot analysis of ARF6 in rat liver tissue lysate with ARF6 antibody at 1 µg/ml.



ARF6 Antibody 2

Immunohistochemistry of ARF6 in human kidney tissue with ARF6 antibody at 5 µg/mL.



ARF6 Antibody 3

Immunofluorescence of ARF6 in human kidney tissue with ARF6 antibody at 20 µg/mL.

Disclaimer

Disclaimer	Optimal dilutions/concentrations should be determined by the end user. The information provided is a guideline for product use. This product is for research use only.
------------	--

For research use only. For additional information, visit ProSci's [Terms and Conditions Page](#).