

UNG1 Antibody

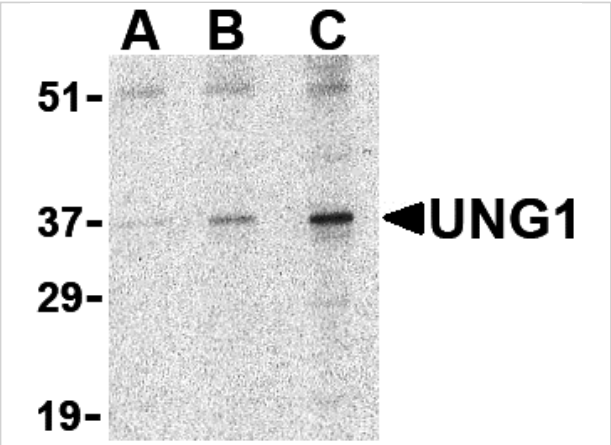
CATALOG NUMBER: 3865

Specifications

Host Species	Rabbit
Species Reactivity	Human, Mouse
Homology	Predicted species reactivity based on immunogen sequence: Rat (100%).
Immunogen	Anti-UNG1 antibody (3865) was raised against a peptide corresponding to 14 amino acids near the center of human UNG1. The immunogen is located within amino acids 200-250 of UNG1.
Conjugate	Unconjugated
Tested Applications	ELISA, IF, IHC-P, WB
User Note	Optimal dilutions for each application to be determined by the researcher.
Predicted Molecular Weight	Predicted: 34kD Observed: 34 kD

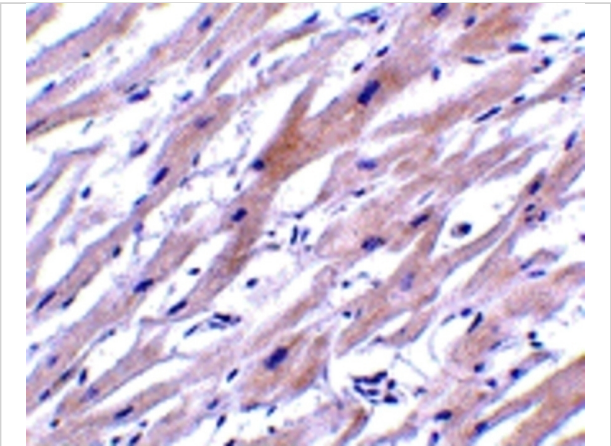
Properties

Purification	UNG1 Antibody is affinity chromatography purified via peptide column.
Clonality	Polyclonal
Isotype	IgG
Physical State	Liquid
Buffer	UNG1 Antibody is supplied in PBS containing 0.02% sodium azide.
Concentration	1 mg/mL
Storage Conditions	UNG1 antibody can be stored at 4°C for three months and -20°C, stable for up to one year. As with all antibodies care should be taken to avoid repeated freeze thaw cycles. Antibodies should not be exposed to prolonged high temperatures.



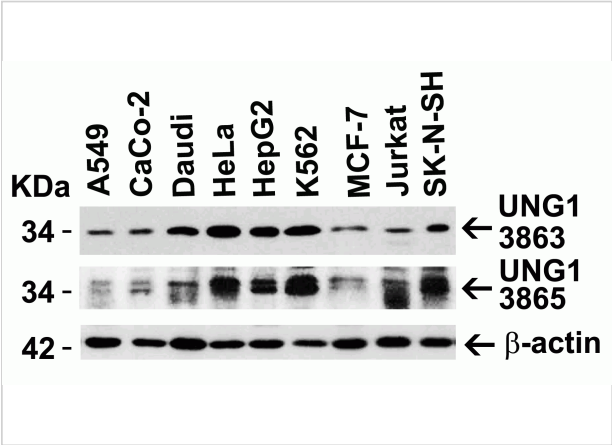
UNG1 Antibody 1

Figure 1 Western Blot Validation in Mouse C2C12 Cell Lysate
 Loading: 15 µg of lysates per lane. Antibodies: UNG1, 3865 (A: 0.5 µg/mL, B: 1 µg/mL and C: 2 µg/mL), 1h incubation at...



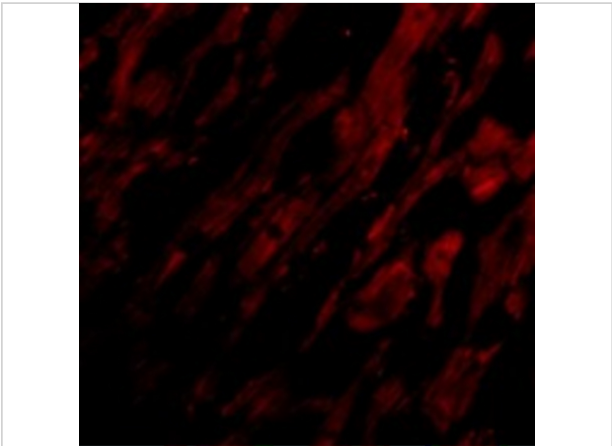
UNG1 Antibody 3

Figure 3 Immunohistochemistry Validation of UNG1 in Human Heart Tissue
 Immunohistochemical analysis of paraffin-embedded human heart tissue using anti-UNG1 antibody (3865) at ...



UNG1 Antibody 2

Figure 2 Independent Antibody Validation (IAV) via Protein Expression Profile in Human Cell Lines
 Loading: 15 µg of lysates per lane. Antibodies: UNG1, 3863 (0.5 µg/mL), UNG1, 38...



UNG1 Antibody 4

Figure 4 Immunofluorescence Validation of UNG1 in Human Heart Tissue
 Immunofluorescent analysis of 4% paraformaldehyde-fixed human heart labeling UNG1 with 3865 at 20 µg/mL, fol...

Disclaimer

Disclaimer	Optimal dilutions/concentrations should be determined by the end user. The information provided is a guideline for product use. This product is for research use only.
------------	--

For research use only. For additional information, visit ProSci's [Terms and Conditions Page](#).