



ProSci Incorporated
12170 Flint Place
Poway, CA 92064, USA
prosci-inc.com

P: +1 (888) 513-9525
Local: +1 (858) 513-2638
Fax: +1 (858) 513-2692

customercare@prosci-inc.com
techsupport@prosci-inc.com

Clusterin Antibody

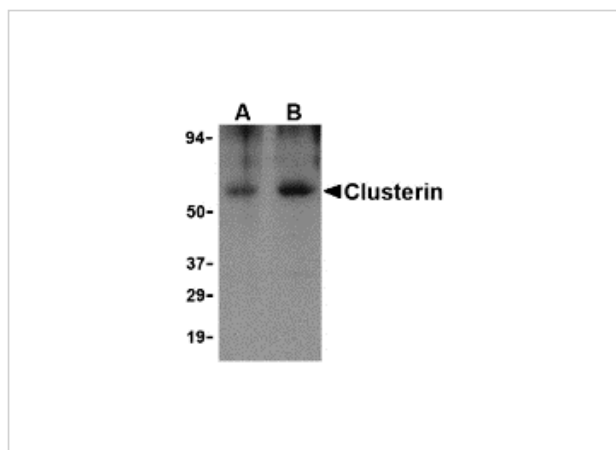
CATALOG NUMBER: 3856

Specifications

Host Species	Rabbit
Species Reactivity	Human, Mouse
Immunogen	Clusterin antibody was raised recombinant human Clusterin isoform 1.
Conjugate	Unconjugated
Tested Applications	ELISA, IF, IHC-P, WB
User Note	Optimal dilutions for each application to be determined by the researcher.

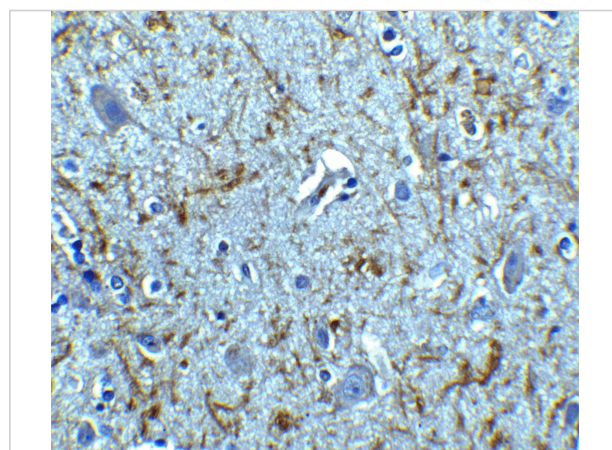
Properties

Purification	Clusterin Antibody is affinity chromatography purified via peptide column.
Clonality	Polyclonal
Isotype	IgG
Physical State	Liquid
Buffer	Clusterin Antibody is supplied in PBS containing 0.02% sodium azide.
Concentration	1 mg/mL
Storage Conditions	Clusterin antibody can be stored at 4°C for three months and -20°C, stable for up to one year. As with all antibodies care should be taken to avoid repeated freeze thaw cycles. Antibodies should not be exposed to prolonged high temperatures.



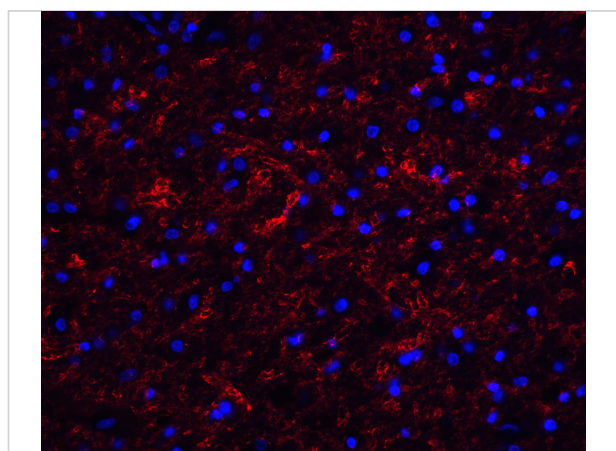
Clusterin Antibody 1

Western blot analysis of Clusterin in human brain tissue lysate with Clusterin body at (A) 0.5 and (B) 1 $\mu\text{g/mL}$.



Clusterin Antibody 2

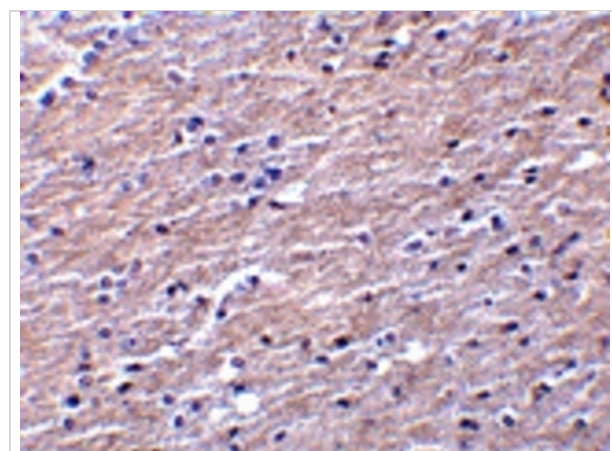
Immunohistochemistry of Clusterin in human brain tissue with Clusterin antibody at 5 $\mu\text{g/mL}$.



Clusterin Antibody 3

Immunofluorescence of Clusterin in human brain tissue with Clusterin antibody at 20 $\mu\text{g/mL}$.

Red: Clusterin Antibody (3856)
Blue: DAPI staining



Clusterin Antibody 4

Immunohistochemistry of Clusterin in human brain tissue with Clusterin antibody at 10 $\mu\text{g/mL}$.

Disclaimer

Disclaimer

Optimal dilutions/concentrations should be determined by the end user. The information provided is a guideline for product use. This product is for research use only.

For research use only. For additional information, visit ProSci's [Terms and Conditions Page](#).