

## PHC3 Antibody

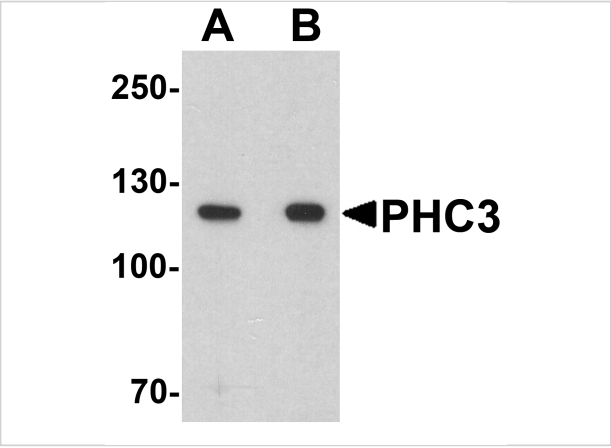
CATALOG NUMBER: 7607

### Specifications

Host Species	Rabbit
Species Reactivity	Human, Mouse, Rat
Immunogen	PHC3 antibody was raised against a 19 amino acid peptide near the amino terminus of human PHC3. The immunogen is located within amino acids 240 - 290 of PHC3.
Conjugate	Unconjugated
Tested Applications	ELISA, WB
User Note	Optimal dilutions for each application to be determined by the researcher.
Specificity	PHC3 antibody is human, mouse and rat specific. At least six isoforms of PHC3 are known to exist.
Predicted Molecular Weight	Predicted: 109 kDa Observed: 120 kDa

### Properties

Purification	PHC3 antibody is affinity chromatography purified via peptide column.
Clonality	Polyclonal
Isotype	IgG
Physical State	Liquid
Buffer	PHC3 antibody is supplied in PBS containing 0.02% sodium azide.
Concentration	1 mg/mL
Storage Conditions	PHC3 antibody can be stored at 4°C for three months and -20°C, stable for up to one year.



PHC3 Antibody 1

Western blot analysis of PHC3 in 3T3 cell lysate with PHC3 antibody at (A) 1 and (B) 2 µg/ml.

Disclaimer

Disclaimer	Optimal dilutions/concentrations should be determined by the end user. The information provided is a guideline for product use. This product is for research use only.
------------	--

For research use only. For additional information, visit ProSci's [Terms and Conditions Page](#).