

## DNM1L Antibody

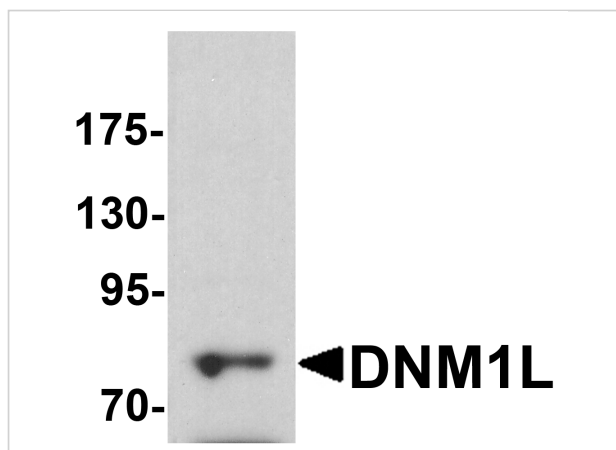
CATALOG NUMBER: 7603

### Specifications

Host Species	Rabbit
Species Reactivity	Human, Mouse
Homology	Predicted species reactivity based on immunogen sequence: Rat: (100%), Bovine: (100%)
Immunogen	DNM1L antibody was raised against a 19 amino acid peptide near the center of human DNM1L. The immunogen is located within amino acids 530 - 580 of DNM1L.
Conjugate	Unconjugated
Tested Applications	ELISA, ICC, IF, WB
User Note	Optimal dilutions for each application to be determined by the researcher.
Specificity	DNM1L antibody is human and mouse reactive. At least four isoforms of DNM1L are known to exist; this antibody will detect the two longest isoforms.
Predicted Molecular Weight	Predicted: 81 kDa Observed: 80 kDa

### Properties

Purification	DNM1L antibody is affinity chromatography purified via peptide column.
Clonality	Polyclonal
Isotype	IgG
Physical State	Liquid
Buffer	DNM1L antibody is supplied in PBS containing 0.02% sodium azide.
Concentration	1 mg/mL
Storage Conditions	DNM1L antibody can be stored at 4°C for three months and -20°C, stable for up to one year.



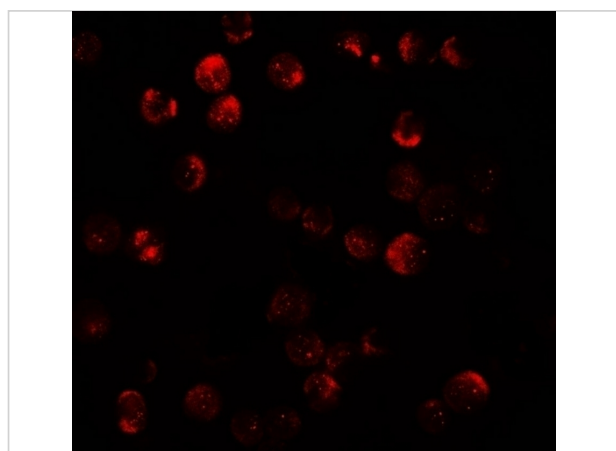
### DNM1L Antibody 1

Western blot analysis of DNM1L in HeLa cell lysate with DNM1L antibody at 1 µg/ml.



### DNM1L Antibody 2

Immunocytochemistry of DNM1L in HeLa cells with DNM1L antibody at 5 µg/mL.



### DNM1L Antibody 3

Immunofluorescence of DNM1L in HeLa cells with DNM1L antibody at 20 µg/mL.

## Disclaimer

#### Disclaimer

Optimal dilutions/concentrations should be determined by the end user. The information provided is a guideline for product use. This product is for research use only.

For research use only. For additional information, visit ProSci's [Terms and Conditions Page](#).