

Alpha-tubulin Antibody

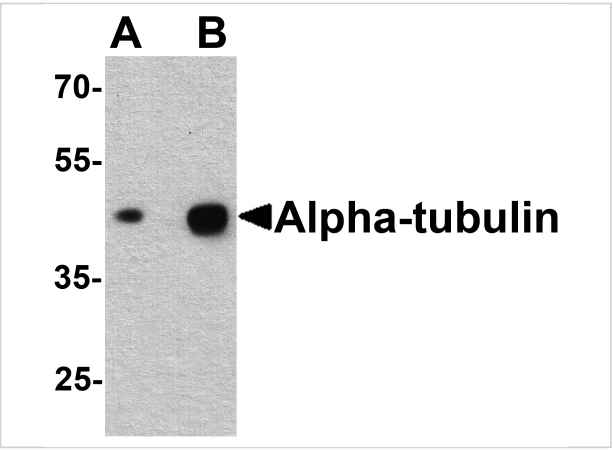
CATALOG NUMBER: 7599

Specifications

Host Species	Rabbit
Species Reactivity	Human, Mouse, Rat
Homology	Predicted species reactivity based on immunogen sequence: Bovine: (100%), Pig: (100%), Chicken: (100%)
Immunogen	Alpha-tubulin antibody was raised against an 18 amino acid peptide near the amino terminus of human alpha-tubulin. The immunogen is located within the first 50 amino acids of Alpha-tubulin.
Conjugate	Unconjugated
Tested Applications	ELISA, IF, IHC-P, WB
User Note	Optimal dilutions for each application to be determined by the researcher.
Specificity	Alpha-tubulin antibody is human, mouse and rat reactive.
Predicted Molecular Weight	Predicted: 50 kDa Observed: 45 kDa

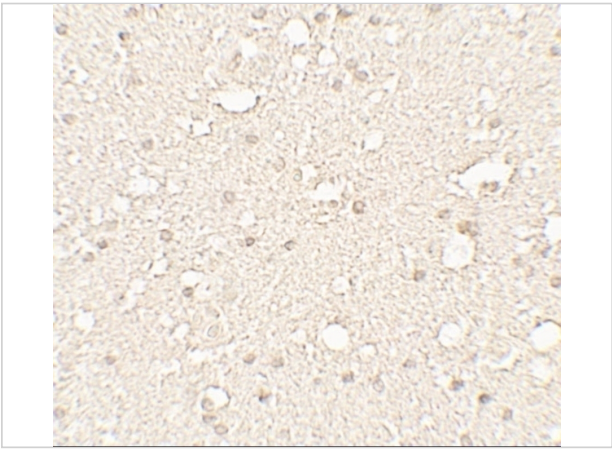
Properties

Purification	Alpha-tubulin antibody is affinity chromatography purified via peptide column.
Clonality	Polyclonal
Isotype	IgG
Physical State	Liquid
Buffer	Alpha-tubulin antibody is supplied in PBS containing 0.02% sodium azide.
Concentration	1 mg/mL
Storage Conditions	Alpha-tubulin antibody can be stored at 4°C for three months and -20°C, stable for up to one year.



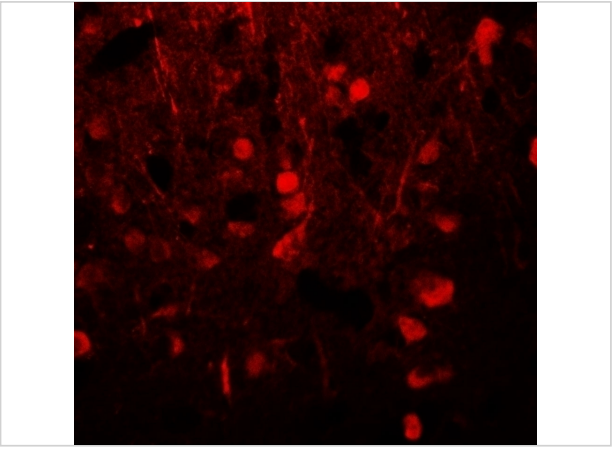
Alpha-tubulin Antibody 1

Western blot analysis of alpha-tubulin in human brain tissue lysate with alpha-tubulin antibody at (A) 0.25 and (B) 0.5 µg/ml.



Alpha-tubulin Antibody 2

Immunohistochemistry of Alpha-tubulin in human brain tissue with Alpha-tubulin antibody at 5 µg/mL.



Alpha-tubulin Antibody 3

Immunofluorescence of Alpha-tubulin in human brain tissue with Alpha-tubulin antibody at 20 µg/mL.

Disclaimer

Disclaimer	Optimal dilutions/concentrations should be determined by the end user. The information provided is a guideline for product use. This product is for research use only.
------------	--

For research use only. For additional information, visit ProSci's [Terms and Conditions Page](#).