



ProSci Incorporated
12170 Flint Place
Poway, CA 92064, USA
prosci-inc.com

P: +1 (888) 513-9525
Local: +1 (858) 513-2638
Fax: +1 (858) 513-2692

customercare@prosci-inc.com
techsupport@prosci-inc.com

Alpha-tubulin Antibody (biotin)

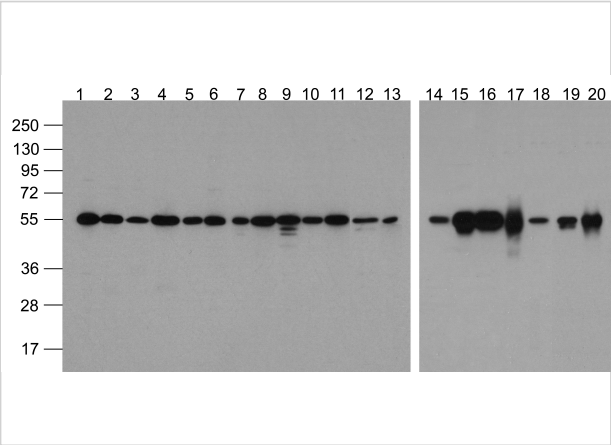
CATALOG NUMBER: 7597-biotin

Specifications

Host Species	Rabbit
Species Reactivity	Chicken, Human, Mouse, Rabbit, Rat, Zebrafish
Immunogen	Biotin-Alpha-tubulin antibody was raised against an 18 amino acid peptide near the carboxy terminus of human alpha-tubulin
Conjugate	Biotin
Tested Applications	ELISA, WB
User Note	Optimal dilutions for each application to be determined by the researcher.
Specificity	Biotin-Alpha-tubulin antibody is human, mouse, rat, rabbit, chicken, and zebrafish reactive.
Predicted Molecular Weight	Predicted: 50 kDa Observed: 55 kDa

Properties

Purification	Biotin-Alpha-tubulin antibody is affinity chromatography purified via peptide column.
Clonality	Polyclonal
Isotype	IgG
Physical State	Liquid
Buffer	Biotin-Alpha-tubulin antibody is supplied in PBS containing 1% BSA and 0.02% sodium azide.
Concentration	1 mg/mL
Storage Conditions	Biotin-Alpha-tubulin antibody can be stored at 4°C for three months and -20°C, stable for up to one year.



Alpha-tubulin Antibody (biotin) 1

Western blot analysis of Alpha-tubulin in multiple cell and tissue lysates with Biotin-Alpha-tubulin antibody at 1 µg/ml. Lanes 1-20: 293, A431, A549, Daudi, HeLa, HepG2, Jurkat, K562, MOLT, 3T3, R...

Disclaimer

Disclaimer	Optimal dilutions/concentrations should be determined by the end user. The information provided is a guideline for product use. This product is for research use only.
------------	--

For research use only. For additional information, visit ProSci's [Terms and Conditions Page](#).