

CXCL12 Antibody

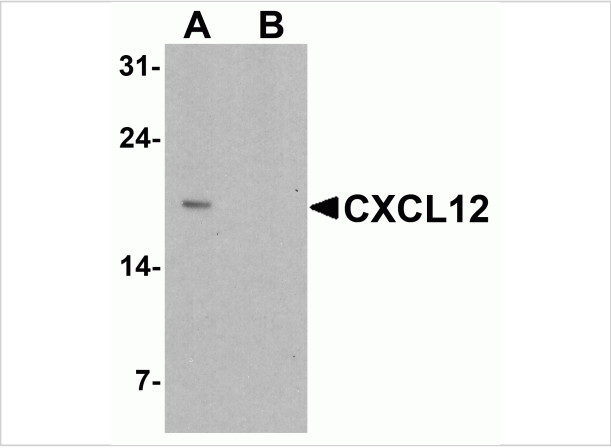
CATALOG NUMBER: 7591

Specifications

Host Species	Rabbit
Species Reactivity	Human, Mouse
Immunogen	CXCL12 antibody was raised against a 16 amino acid peptide near the center of human CXCL12 . The immunogen is located within the last 50 amino acids of CXCL12.
Conjugate	Unconjugated
Tested Applications	ELISA, ICC, WB
User Note	Optimal dilutions for each application to be determined by the researcher.
Specificity	CXCL12 antibody is human and mouse reactive. Multiple isoforms of CXCL12 are known to exist.
Predicted Molecular Weight	Predicted: 15 kDa Observed: 18 kDa

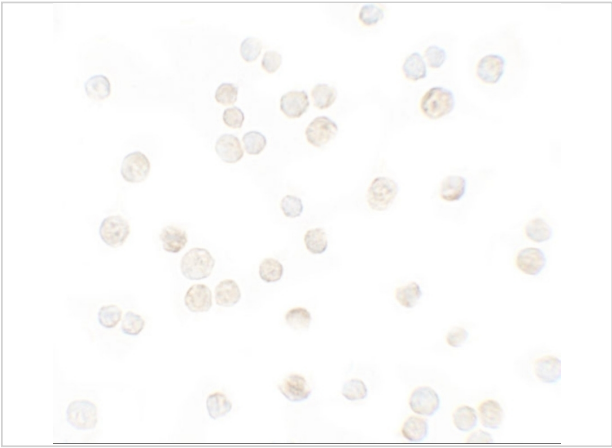
Properties

Purification	CXCL12 antibody is affinity chromatography purified via peptide column.
Clonality	Polyclonal
Isotype	IgG
Physical State	Liquid
Buffer	CXCL12 antibody is supplied in PBS containing 0.02% sodium azide.
Concentration	1 mg/mL
Storage Conditions	CXCL12 antibody can be stored at 4°C for three months and -20°C, stable for up to one year.



CXCL12 Antibody 1

Western blot analysis of CXCL12 in HeLa cell lysate with CXCL12 antibody at 1 µg/ml in (A) the absence and (B) the presence of blocking peptide.



CXCL12 Antibody 2

Immunocytochemistry of CXCL12 in HeLa cells with CXCL12 antibody at 5 µg/mL.

Disclaimer

Disclaimer	Optimal dilutions/concentrations should be determined by the end user. The information provided is a guideline for product use. This product is for research use only.
------------	--

For research use only. For additional information, visit ProSci's [Terms and Conditions Page](#).