

MD-1 Antibody

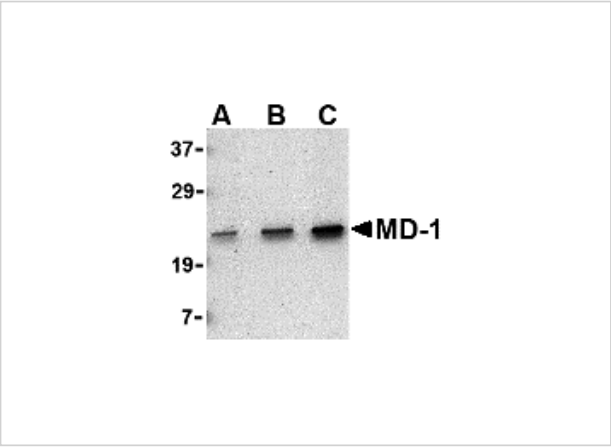
CATALOG NUMBER: 3847

Specifications

Host Species	Rabbit
Species Reactivity	Human
Homology	Predicted species reactivity based on immunogen sequence: Mouse: (75%)
Immunogen	MD-1 antibody was raised against a 14 amino acid synthetic peptide from near the carboxy terminus of human MD-1. The immunogen is located within the last 50 amino acids of MD-1.
Conjugate	Unconjugated
Tested Applications	ELISA, IHC-P, WB
User Note	Optimal dilutions for each application to be determined by the researcher.

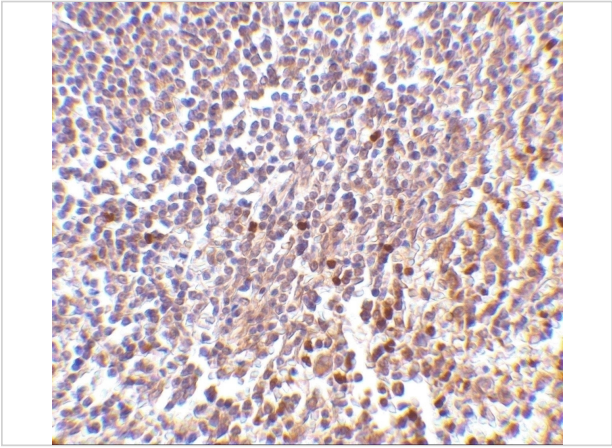
Properties

Purification	MD-1 Antibody is affinity chromatography purified via peptide column.
Clonality	Polyclonal
Isotype	IgG
Physical State	Liquid
Buffer	MD-1 Antibody is supplied in PBS containing 0.02% sodium azide.
Concentration	1 mg/mL
Storage Conditions	MD-1 antibody can be stored at 4°C for three months and -20°C, stable for up to one year. As with all antibodies care should be taken to avoid repeated freeze thaw cycles. Antibodies should not be exposed to prolonged high temperatures.



MD-1 Antibody 1

Western blot analysis of MD-1 in Daudi cell lysate with MD-1 antibody at (A) 0.5, (B) 1 and (C) 2 µg/mL.



MD-1 Antibody 2

Immunohistochemistry of MD-1 in human spleen tissue with MD-1 antibody at 2 µg/mL.

Disclaimer

Disclaimer	Optimal dilutions/concentrations should be determined by the end user. The information provided is a guideline for product use. This product is for research use only.
------------	--

For research use only. For additional information, visit ProSci's [Terms and Conditions Page](#).