

MAP1LC3B Antibody

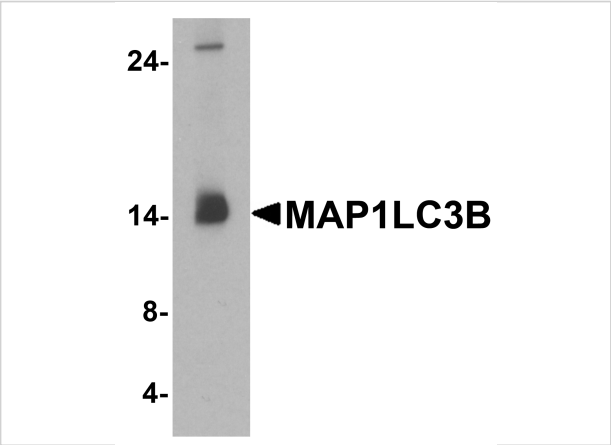
CATALOG NUMBER: 7581

Specifications

Host Species	Rabbit
Species Reactivity	Human, Mouse, Rat
Homology	Predicted species reactivity based on immunogen sequence: Bovine: (100%)
Immunogen	MAP1LC3B antibody was raised against an 18 amino acid peptide near the amino terminus of human MAP1LC3B. The immunogen is located within the first 50 amino acids of MAP1LC3B.
Conjugate	Unconjugated
Tested Applications	ELISA, IF, IHC-P, WB
User Note	Optimal dilutions for each application to be determined by the researcher.
Specificity	MAP1LC3B antibody is human, mouse and rat reactive. Multiple isoforms MAP1LC3B are known to exist. MAP1LC3B antibody is predicted to not cross-react with MAP1LC3A or MAP1LC3C
Predicted Molecular Weight	Predicted: 14 kDa Observed: 14 kDa

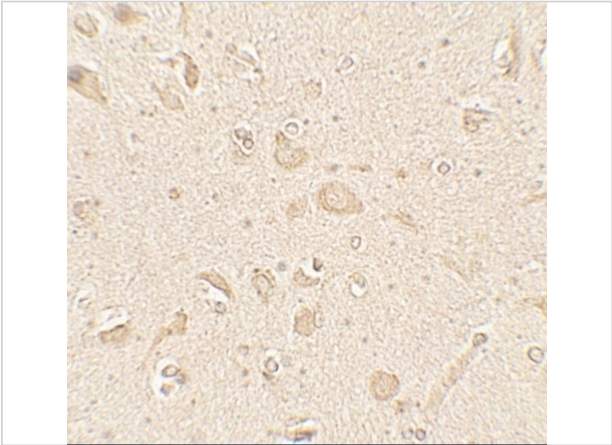
Properties

Purification	MAP1LC3B antibody is affinity chromatography purified via peptide column.
Clonality	Polyclonal
Isotype	IgG
Physical State	Liquid
Buffer	MAP1LC3B antibody is supplied in PBS containing 0.02% sodium azide.
Concentration	1 mg/mL
Storage Conditions	MAP1LC3B antibody can be stored at 4°C for three months and -20°C, stable for up to one year.



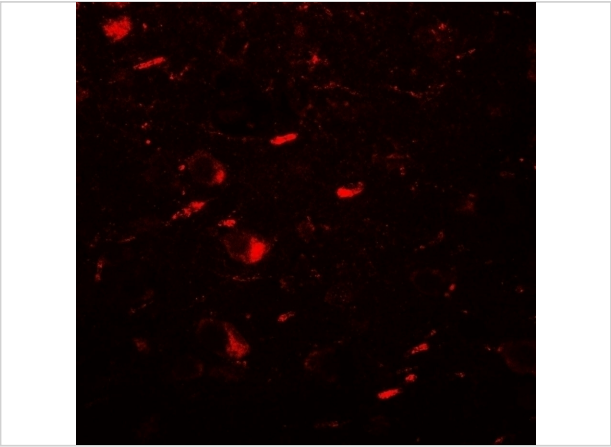
MAP1LC3B Antibody 1

Western blot analysis of MAP1LC3B in human brain tissue lysate with MAP1LC3B antibody at 1 µg/ml.



MAP1LC3B Antibody 2

Immunohistochemistry of MAP1LC3B in human brain tissue with MAP1LC3B antibody at 5 µg/mL.



MAP1LC3B Antibody 3

Immunofluorescence of MAP1LC3B in human brain tissue with MAP1LC3B antibody at 20 µg/mL.

Disclaimer

Disclaimer	Optimal dilutions/concentrations should be determined by the end user. The information provided is a guideline for product use. This product is for research use only.
------------	--

For research use only. For additional information, visit ProSci's [Terms and Conditions Page](#).