

ZNF821 Antibody

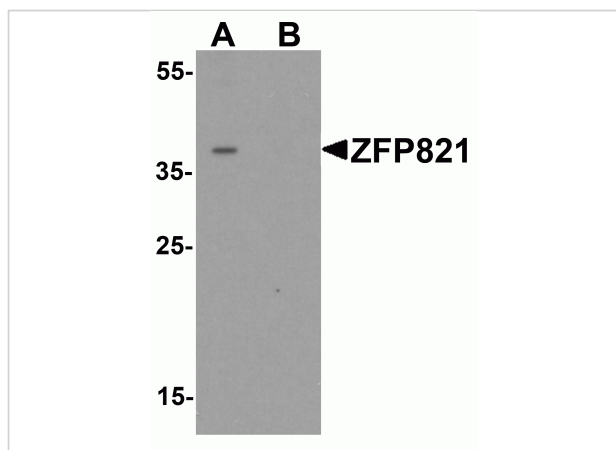
CATALOG NUMBER: 7537

Specifications

| | |
|----------------------------|--|
| Host Species | Rabbit |
| Species Reactivity | Human, Mouse |
| Homology | Predicted species reactivity based on immunogen sequence: Bovine: (100%) |
| Immunogen | ZNF821 antibody was raised against an 18 amino acid peptide near the carboxy terminus of human ZNF821. The immunogen is located within amino acids 270 - 320 of ZNF821. |
| Conjugate | Unconjugated |
| Tested Applications | ELISA, ICC, IF, WB |
| User Note | Optimal dilutions for each application to be determined by the researcher. |
| Specificity | ZNF821 antibody is human and mouse reactive. At least three isoforms of ZNF821 are known to exist; this antibody will detect the two largest isoforms. |
| Predicted Molecular Weight | Predicted: 41 kDa Observed: 38 kDa |

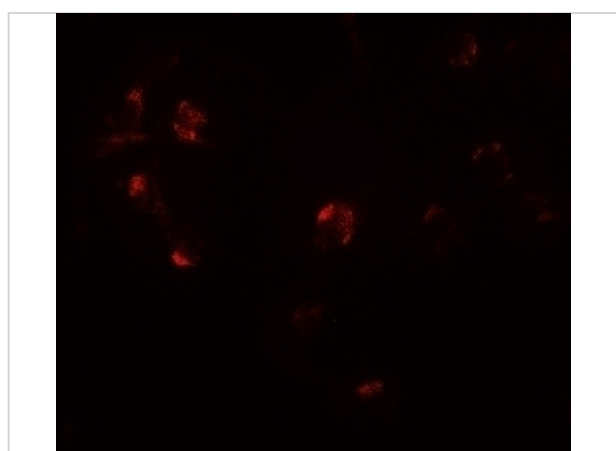
Properties

| | |
|--------------------|---|
| Purification | ZNF821 antibody is affinity chromatography purified via peptide column. |
| Clonality | Polyclonal |
| Isotype | IgG |
| Physical State | Liquid |
| Buffer | ZNF821 antibody is supplied in PBS containing 0.02% sodium azide. |
| Concentration | 1 mg/mL |
| Storage Conditions | ZNF821 antibody can be stored at 4°C for three months and -20°C, stable for up to one year. |



ZNF821 Antibody 1

Western blot analysis of ZNF821 in Jurkat cell lysate with ZNF821 antibody at 0.5 µg/ml in (A) the absence and (B) the presence of blocking peptide.



ZNF821 Antibody 3

Immunofluorescence of ZNF821 in Jurkat cells with ZNF821 antibody at 20 µg/mL.



ZNF821 Antibody 2

Immunocytochemistry of ZNF821 in Jurkat cells with ZNF821 antibody at 2.5 µg/mL.

Disclaimer

Disclaimer

Optimal dilutions/concentrations should be determined by the end user. The information provided is a guideline for product use. This product is for research use only.

For research use only. For additional information, visit ProSci's [Terms and Conditions Page](#).