

BHLHA15 Antibody

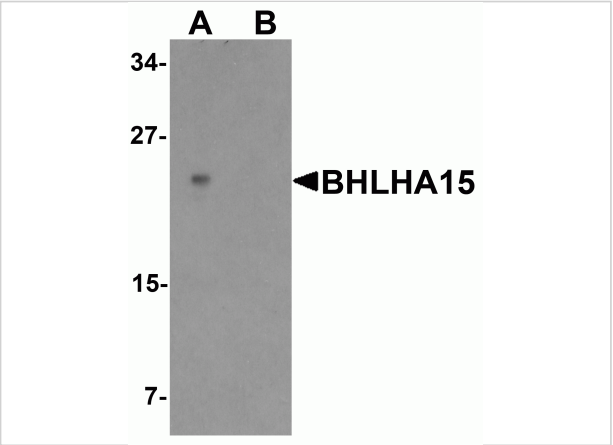
CATALOG NUMBER: 7529

Specifications

| | |
|----------------------------|---|
| Host Species | Rabbit |
| Species Reactivity | Human, Mouse, Rat |
| Homology | Predicted species reactivity based on immunogen sequence: Bovine: (71%) |
| Immunogen | BHLHA15 antibody was raised against a 18 amino acid peptide near the center of human BHLHA15. The immunogen is located within amino acids 60 - 110 of BHLHA15. |
| Conjugate | Unconjugated |
| Tested Applications | ELISA, IF, IHC-P, WB |
| User Note | Optimal dilutions for each application to be determined by the researcher. |
| Specificity | BHLHA15 antibody is human, mouse and rat reactive. |
| Predicted Molecular Weight | Predicted: 21 kDa Observed: 24 kDa |

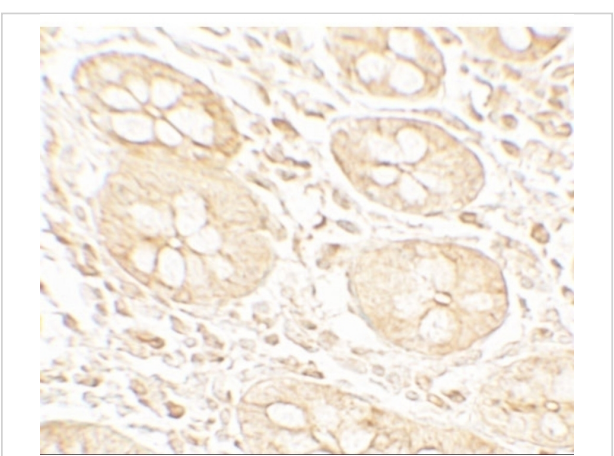
Properties

| | |
|--------------------|--|
| Purification | BHLHA15 antibody is affinity chromatography purified via peptide column. |
| Clonality | Polyclonal |
| Isotype | IgG |
| Physical State | Liquid |
| Buffer | BHLHA15 antibody is supplied in PBS containing 0.02% sodium azide. |
| Concentration | 1 mg/mL |
| Storage Conditions | BHLHA15 antibody can be stored at 4°C for three months and -20°C, stable for up to one year. |



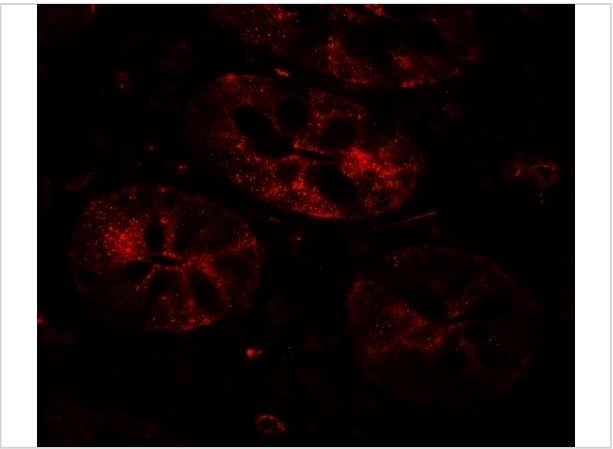
BHLHA15 Antibody 1

Western blot analysis of BHLHA15 in rat small intestine tissue lysate with BHLHA15 antibody at 1 µg/ml in (A) the absence and (B) the presence of blocking peptide



BHLHA15 Antibody 2

Immunohistochemistry of BHLHA15 in human small intestine tissue with BHLHA15 antibody at 5 µg/mL.



BHLHA15 Antibody 3

Immunofluorescence of BHLHA15 in human small intestine tissue with BHLHA15 antibody at 20 µg/mL.

Disclaimer

| | |
|-------------------|--|
| Disclaimer | Optimal dilutions/concentrations should be determined by the end user. The information provided is a guideline for product use. This product is for research use only. |
|-------------------|--|

For research use only. For additional information, visit ProSci's [Terms and Conditions Page](#).