

ADROPIN Antibody

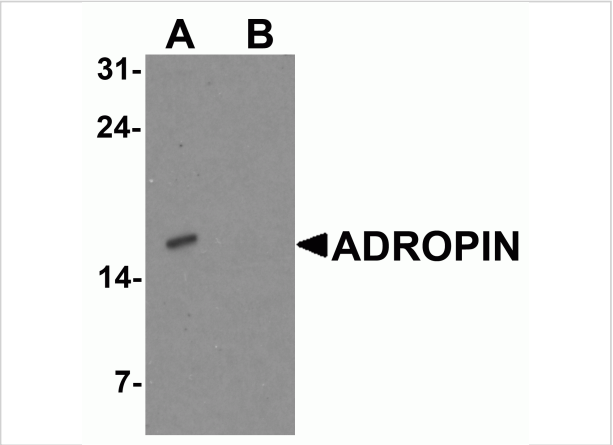
CATALOG NUMBER: 7527

Specifications

Host Species	Rabbit
Species Reactivity	Human, Mouse, Rat
Homology	Predicted species reactivity based on immunogen sequence: Bovine: (94%)
Immunogen	ADROPIN antibody was raised against an 18 amino acid peptide near the carboxy terminus of human ADROPIN. The immunogen is located within the last 50 amino acids of ADROPIN.
Conjugate	Unconjugated
Tested Applications	ELISA, IF, IHC-P, WB
User Note	Optimal dilutions for each application to be determined by the researcher.
Specificity	ADROPIN antibody is human, mouse and rat reactive. Despite its predicted molecular weight, ADROPIN often migrates at a higher than expected molecular weight in SDS-PAGE.
Predicted Molecular Weight	Predicted: 8 kDa Observed: 16 kDa

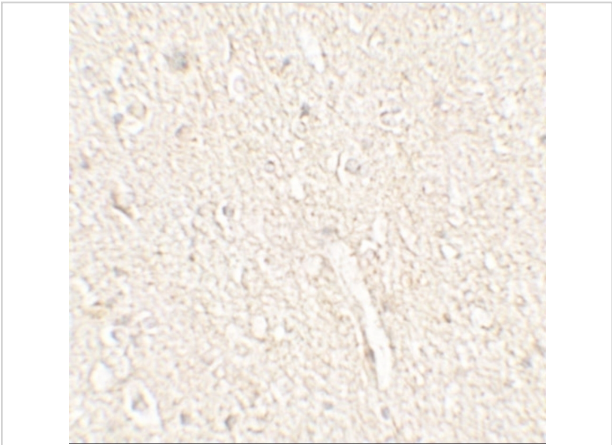
Properties

Purification	ADROPIN antibody is affinity chromatography purified via peptide column.
Clonality	Polyclonal
Isotype	IgG
Physical State	Liquid
Buffer	ADROPIN antibody is supplied in PBS containing 0.02% sodium azide.
Concentration	1 mg/mL
Storage Conditions	ADROPIN antibody can be stored at 4°C for three months and -20°C, stable for up to one year.



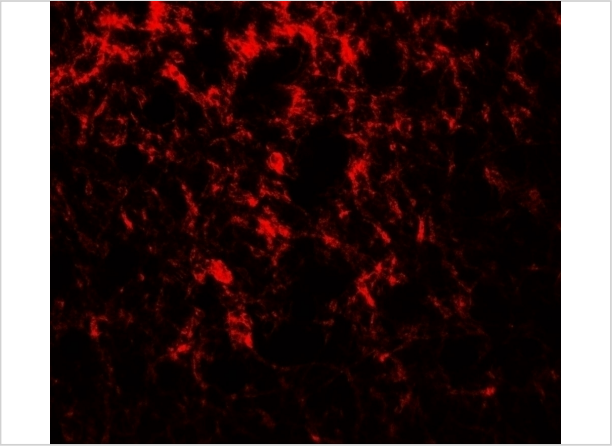
ADROPIN Antibody 1

Western blot analysis of ADROPIN in human brain tissue lysate with ADROPIN antibody at 2 µg/ml in (A) the absence and (B) the presence of blocking peptide.



ADROPIN Antibody 2

Immunohistochemistry of ADROPIN in human brain tissue with ADROPIN antibody at 5 µg/mL.



ADROPIN Antibody 3

Immunofluorescence of ADROPIN in human brain tissue with ADROPIN antibody at 20 µg/mL.

Disclaimer

Disclaimer	Optimal dilutions/concentrations should be determined by the end user. The information provided is a guideline for product use. This product is for research use only.
------------	--

For research use only. For additional information, visit ProSci's [Terms and Conditions Page](#).