



ProSci Incorporated
12170 Flint Place
Poway, CA 92064, USA
prosci-inc.com

P: +1 (888) 513-9525
Local: +1 (858) 513-2638
Fax: +1 (858) 513-2692

customercare@prosci-inc.com
techsupport@prosci-inc.com

AIMP1 Antibody

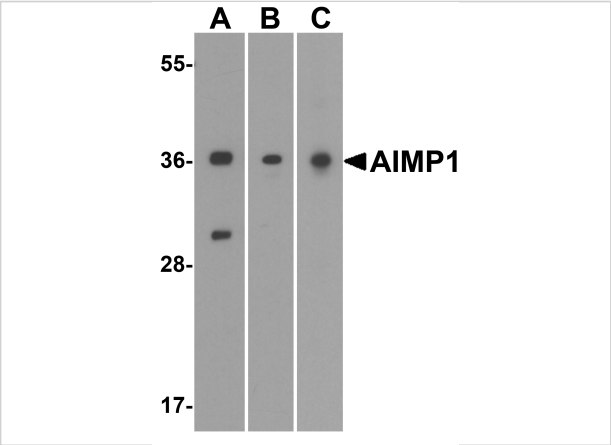
CATALOG NUMBER: 7513

Specifications

Host Species	Rabbit
Species Reactivity	Human, Mouse, Rat
Homology	Predicted species reactivity based on immunogen sequence: Chicken: (73%)
Immunogen	AIMP1 antibody was raised against a 19 amino acid peptide near the carboxy terminus of human AIMP1. The immunogen is located within amino acids 240 - 290 of AIMP1.
Conjugate	Unconjugated
Tested Applications	ELISA, IHC-P, WB
User Note	Optimal dilutions for each application to be determined by the researcher.
Specificity	AIMP1 antibody is human, mouse and rat reactive. At least two isoforms of AIMP1 are known to exist; this antibody will recognize both isoforms. AIMP1 antibody is predicted to not cross-react with AIMP2.
Predicted Molecular Weight	Predicted: 46 kDa Observed: 36 kDa

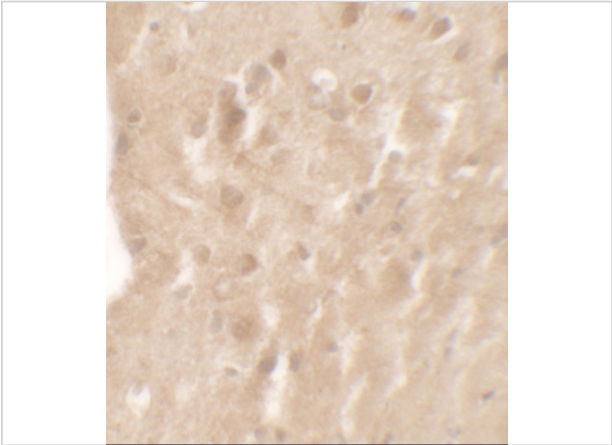
Properties

Purification	AIMP1 antibody is affinity chromatography purified via peptide column.
Clonality	Polyclonal
Isotype	IgG
Physical State	Liquid
Buffer	AIMP1 antibody is supplied in PBS containing 0.02% sodium azide.
Concentration	1 mg/mL
Storage Conditions	AIMP1 antibody can be stored at 4°C for three months and -20°C, stable for up to one year.



AIMP1 Antibody 1

Western blot analysis of AIMP1 in (A) human, (B) mouse, and (C) rat brain tissue lysate with AIMP1 antibody at 1 µg/mL.



AIMP1 Antibody 2

Immunohistochemistry of AIMP1 in mouse brain tissue with AIMP1 antibody at 5 µg/mL.

Disclaimer

Disclaimer	Optimal dilutions/concentrations should be determined by the end user. The information provided is a guideline for product use. This product is for research use only.
------------	--

For research use only. For additional information, visit ProSci's [Terms and Conditions Page](#).