

## IL-37 Antibody

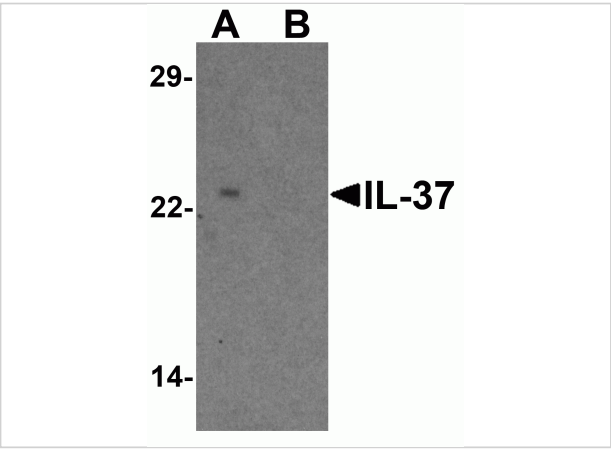
CATALOG NUMBER: 7499

### Specifications

Host Species	Rabbit
Species Reactivity	Human
Immunogen	IL-37 antibody was raised against a 17 amino acid peptide near the amino terminus of human IL-37. The immunogen is located within amino acids 30 - 80 of IL-37 .
Conjugate	Unconjugated
Tested Applications	ELISA, IF, IHC-P, WB
User Note	Optimal dilutions for each application to be determined by the researcher.
Specificity	IL-37 antibody is human specific. Multiple isoforms of IL-37 are known to exist; this antibody will only detect the largest isoform. IL-37 antibody is predicted to not cross-react with IL-36.
Predicted Molecular Weight	Predicted: 24 kDa Observed: 23kDa

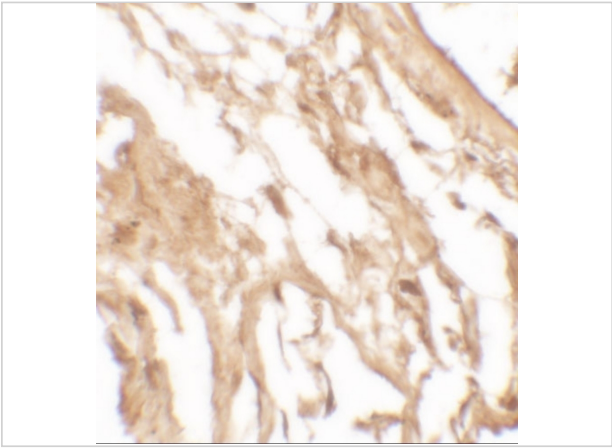
### Properties

Purification	IL-37 Antibody is affinity chromatography purified via peptide column.
Clonality	Polyclonal
Isotype	IgG
Physical State	Liquid
Buffer	IL-37 Antibody is supplied in PBS containing 0.02% sodium azide.
Concentration	1 mg/mL
Storage Conditions	IL-37 antibody can be stored at 4°C for three months and -20°C, stable for up to one year.



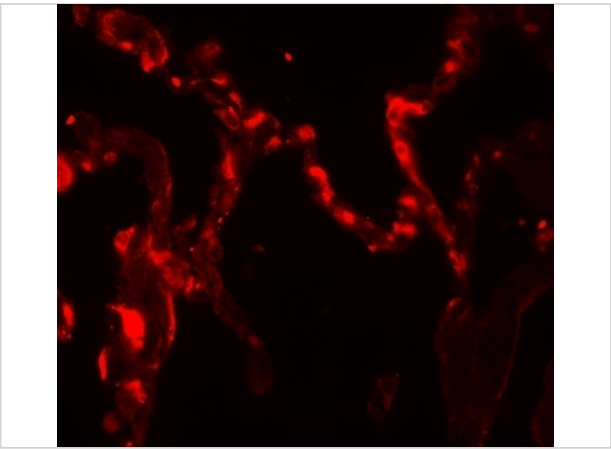
IL-37 Antibody 1

Western blot analysis of IL-37 in human lung tissue lysate with IL-37 antibody at 1 µg/ml in (A) the presence and (B) the absence of blocking peptide.



IL-37 Antibody 2

Immunohistochemistry of IL-12A in human kidney tissue with IL-12A antibody at 5 µg/mL.



IL-37 Antibody 3

Immunofluorescence of IL-12A in human kidney tissue with IL-12A antibody at 20 µg/mL.

Disclaimer

Disclaimer	Optimal dilutions/concentrations should be determined by the end user. The information provided is a guideline for product use. This product is for research use only.
------------	--

For research use only. For additional information, visit ProSci's [Terms and Conditions Page](#).