

SOGA1 Antibody

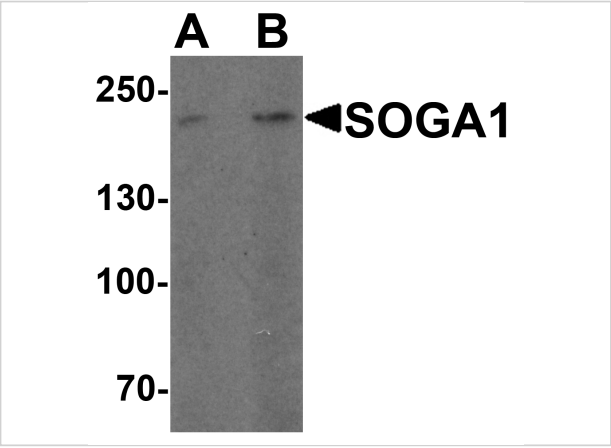
CATALOG NUMBER: 7487

Specifications

Host Species	Rabbit
Species Reactivity	Human
Homology	Predicted species reactivity based on immunogen sequence: Mouse: (93%)
Immunogen	SOGA1 antibody was raised against a 16 amino acid peptide near the carboxy terminus of human SOGA. The immunogen is located within the last 50 amino acids of SOGA1 .
Conjugate	Unconjugated
Tested Applications	ELISA, IF, WB
User Note	Optimal dilutions for each application to be determined by the researcher.
Specificity	SOGA1 antibody is human specific. At least four isoforms of SOGA1 are known to exist.
Predicted Molecular Weight	Predicted: 183 kDa Observed: 200kDa

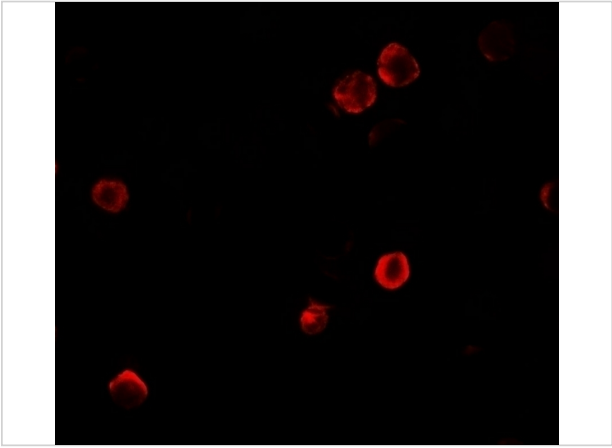
Properties

Purification	SOGA1 Antibody is affinity chromatography purified via peptide column.
Clonality	Polyclonal
Isotype	IgG
Physical State	Liquid
Buffer	SOGA1 Antibody is supplied in PBS containing 0.02% sodium azide.
Concentration	1 mg/mL
Storage Conditions	SOGA1 antibody can be stored at 4°C for three months and -20°C, stable for up to one year.



SOGA1 Antibody 1

Western blot analysis of SOGA1 in HeLa cell lysate with SOGA1 antibody at (A) 1 and (B) 2 µg/ml.



SOGA1 Antibody 2

Immunofluorescence of SOGA1 in HeLa cells with SOGA1 antibody at 5 µg/mL.

Disclaimer

Disclaimer	Optimal dilutions/concentrations should be determined by the end user. The information provided is a guideline for product use. This product is for research use only.
-------------------	--

For research use only. For additional information, visit ProSci's [Terms and Conditions Page](#).