

## TIM-4 Antibody

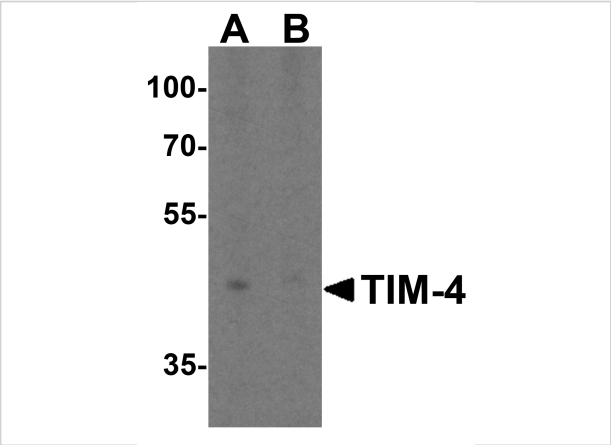
CATALOG NUMBER: 3815

### Specifications

<b>Host Species</b>	Rabbit
<b>Species Reactivity</b>	Human, Mouse
<b>Immunogen</b>	TIM-4 antibody was raised against a 16 amino acid synthetic peptide from near the center of human TIM-4. The immunogen is located within amino acids 60 - 110 of TIM-4.
<b>Conjugate</b>	Unconjugated
<b>Tested Applications</b>	ELISA, ICC, IF, IHC-P, WB
<b>User Note</b>	Optimal dilutions for each application to be determined by the researcher.
<b>Specificity</b>	At least four isoforms of TIM-4 are known to exist; this antibody will detect all four isoforms.
<b>Predicted Molecular Weight</b>	Observed: 45 kDa

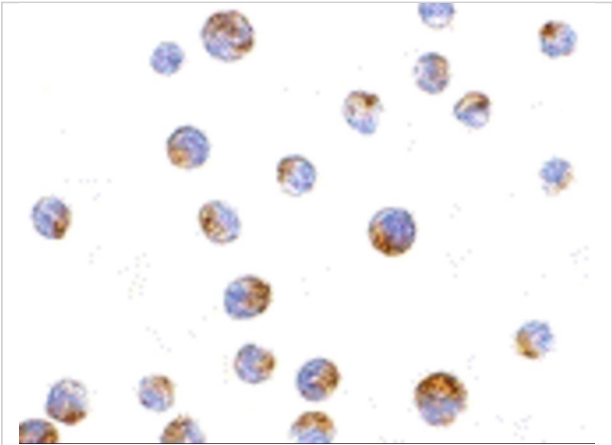
### Properties

<b>Purification</b>	TIM-4 Antibody is affinity chromatography purified via peptide column.
<b>Clonality</b>	Polyclonal
<b>Isotype</b>	IgG
<b>Physical State</b>	Liquid
<b>Buffer</b>	TIM-4 Antibody is supplied in PBS containing 0.02% sodium azide.
<b>Concentration</b>	1 mg/mL
<b>Storage Conditions</b>	TIM-4 antibody can be stored at 4°C for three months and -20°C, stable for up to one year. As with all antibodies care should be taken to avoid repeated freeze thaw cycles. Antibodies should not be exposed to prolonged high temperatures.



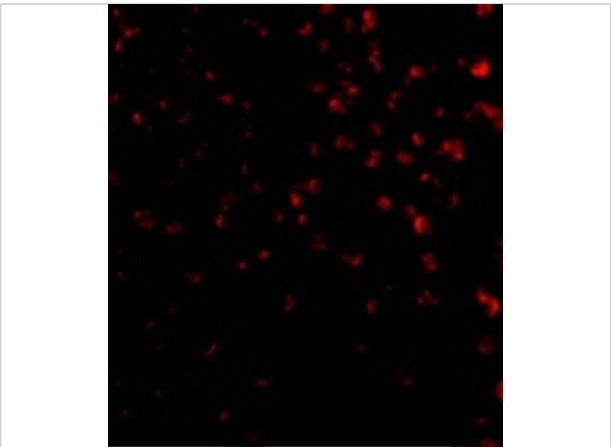
TIM-4 Antibody 1

Western blot analysis of TIM-4 in RAW264.7 cell lysate with TIM-4 antibody at 2 µg/mL in (A) the absence and (B) the presence of blocking peptide.



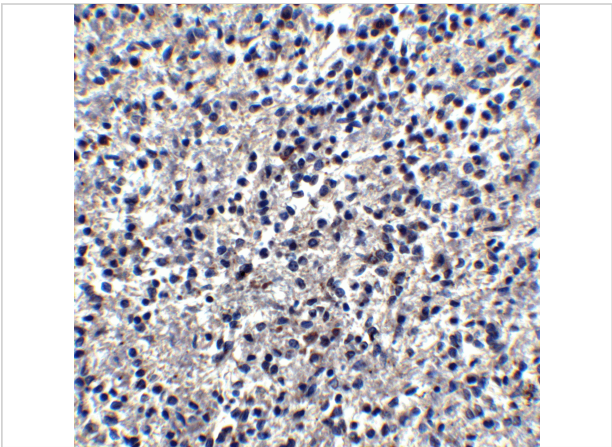
TIM-4 Antibody 2

Immunocytochemistry of TIM-4 in Jurkat cells with TIM-4 antibody at 10 µg/mL.



TIM-4 Antibody 3

Immunofluorescence of TIM-4 in Jurkat cells with TIM-4 antibody at 20 µg/mL.



TIM-4 Antibody 4

Immunohistochemistry of TIM-4 in human spleen tissue with TIM-4 antibody at 2.5 µg/mL.

Disclaimer

Disclaimer	Optimal dilutions/concentrations should be determined by the end user. The information provided is a guideline for product use. This product is for research use only.
------------	--

For research use only. For additional information, visit ProSci's [Terms and Conditions Page](#).