

SPP1 Antibody

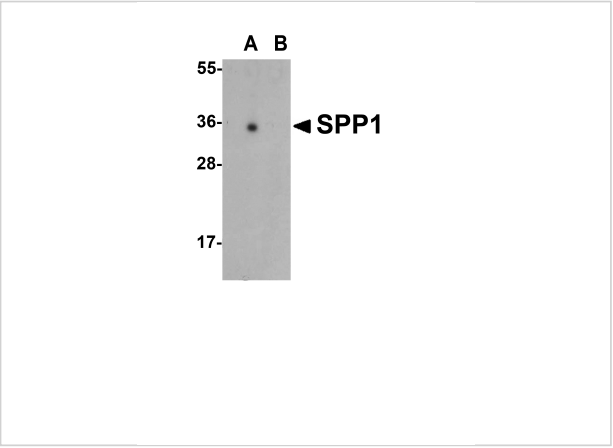
CATALOG NUMBER: 7443

Specifications

Host Species	Rabbit
Species Reactivity	Human, Mouse, Rat
Homology	Predicted species reactivity based on immunogen sequence: Pig: (94%), Bovine: (83%)
Immunogen	SPP1 antibody was raised against an 18 amino acid peptide near the amino terminus of human SPP1. The immunogen is located within amino acids 50 - 100 of SPP1.
Conjugate	Unconjugated
Tested Applications	ELISA, IF, IHC-P, WB
User Note	Optimal dilutions for each application to be determined by the researcher.
Specificity	SPP1 antibody is human, mouse and rat reactive. Multiple isoforms of SPP1 are known to exist.
Predicted Molecular Weight	Predicted: 36 kDa Observed: 37 kDa

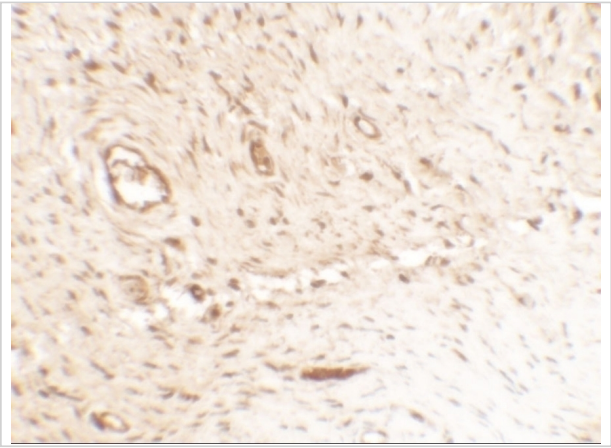
Properties

Purification	SPP1 Antibody is affinity chromatography purified via peptide column.
Clonality	Polyclonal
Isotype	IgG
Physical State	Liquid
Buffer	SPP1 Antibody is supplied in PBS containing 0.02% sodium azide.
Concentration	1 mg/mL
Storage Conditions	SPP1 antibody can be stored at 4°C for three months and -20°C, stable for up to one year.



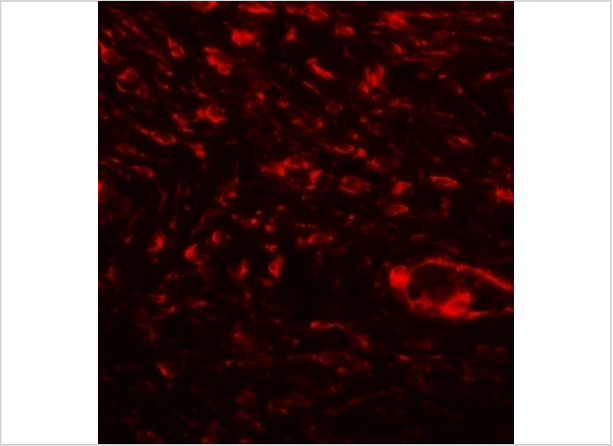
SPP1 Antibody 1

Western blot analysis of SPP1 in human bladder tissue lysate with SPP1 antibody at 1 µg/mL in (A) the absence and (B) the presence of blocking peptide



SPP1 Antibody 2

Immunohistochemistry of SPP1 in human bladder tissue with SPP1 antibody at 5 µg/mL.



SPP1 Antibody 3

Immunofluorescence of SPP1 in human bladder tissue with SPP1 antibody at 20 µg/mL.

Disclaimer

Disclaimer	Optimal dilutions/concentrations should be determined by the end user. The information provided is a guideline for product use. This product is for research use only.
------------	--

For research use only. For additional information, visit ProSci's [Terms and Conditions Page](#).