

## IL-27 Antibody

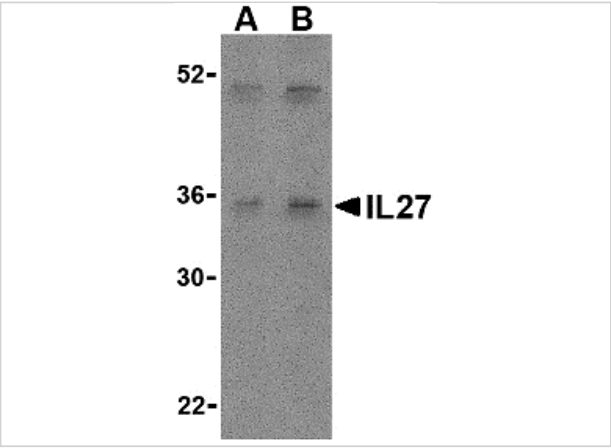
CATALOG NUMBER: 3799

### Specifications

Host Species	Rabbit
Species Reactivity	Human, Mouse
Homology	Predicted species reactivity based on immunogen sequence: Pig: (92%), Rat: (79%)
Immunogen	Anti-IL-27 antibody (3799) was raised against a peptide corresponding to 14 amino acids near the center of human IL-27. The immunogen is located within amino acids 80 - 130 of IL-27.
Conjugate	Unconjugated
Tested Applications	ELISA, WB
User Note	Optimal dilutions for each application to be determined by the researcher.
Predicted Molecular Weight	Predicted: 28 kDa Observed: 28 kDa

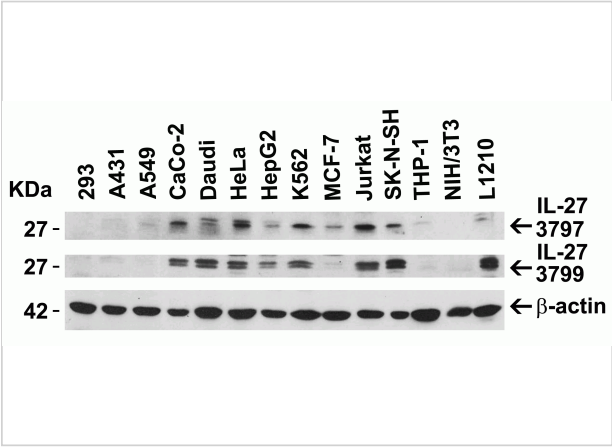
### Properties

Purification	IL-27 Antibody is affinity chromatography purified via peptide column.
Clonality	Polyclonal
Isotype	IgG
Physical State	Liquid
Buffer	IL-27 Antibody is supplied in PBS containing 0.02% sodium azide.
Concentration	1 mg/mL
Storage Conditions	IL-27 antibody can be stored at 4°C for three months and -20°C, stable for up to one year. As with all antibodies care should be taken to avoid repeated freeze thaw cycles. Antibodies should not be exposed to prolonged high temperatures.



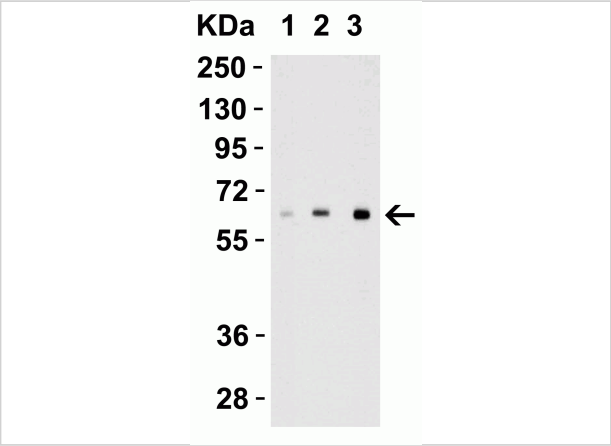
### IL-27 Antibody 1

**Figure 1 Western Blot Validation in Human Daudi Cell Lines**  
 Loading: 15 µg of lysates per lane. Antibodies: IL-27 3799, (A: 2 µg/mL, B: 4 µg/mL), 1h incubation at RT in 5% NFDm/TB...



### IL-27 Antibody 2

**Figure 2 Independent Antibody Validation (IAV) via Protein Expression Profile in Cell Lines**  
 Loading: 15 µg of lysates per lane. Antibodies: IL-27 3797 (4 µg/mL), IL-27 3799 (4 µg/mL), 1h incubation at RT in 5% NFDm/TB...



### IL-27 Antibody 3

**Figure 3 Recombinant Protein Validation**  
 Loading: 30 ng of human recombinant IL-17 (IL-17A+IL-17B) protein per lane. Antibodies: IL-27 3799, 1h incubation at RT in 5% NFDm/TBST.S...

## Disclaimer

#### Disclaimer

Optimal dilutions/concentrations should be determined by the end user. The information provided is a guideline for product use. This product is for research use only.

For research use only. For additional information, visit ProSci's [Terms and Conditions Page](#).