



ProSci Incorporated
12170 Flint Place
Poway, CA 92064, USA
prosci-inc.com

P: +1 (888) 513-9525
Local: +1 (858) 513-2638
Fax: +1 (858) 513-2692

customercare@prosci-inc.com
techsupport@prosci-inc.com

GABARAP Antibody

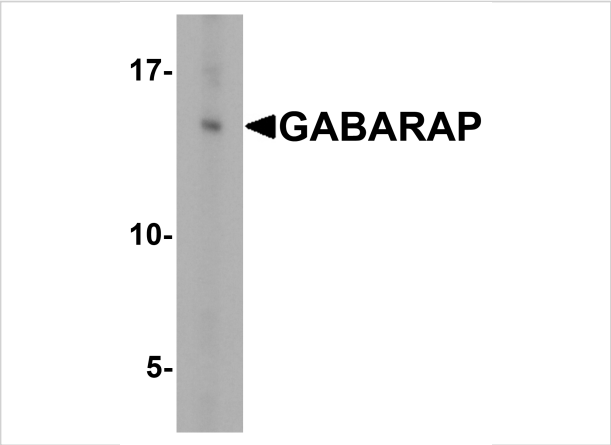
CATALOG NUMBER: 7359

Specifications

Host Species	Rabbit
Species Reactivity	Human, Mouse, Rat
Homology	Predicted species reactivity based on immunogen sequence: Rabbit: (100%), Bovine: (100%)
Immunogen	GABARAP antibody was raised against a 19 amino acid peptide near the amino terminus of human GABARAP. The immunogen is located within the first 50 amino acids of GABARAP.
Conjugate	Unconjugated
Tested Applications	ELISA, IF, IHC-P, WB
User Note	Optimal dilutions for each application to be determined by the researcher.
Specificity	Multiple isoforms of GABARAP exist due to alternative splicing events.
Predicted Molecular Weight	Predicted: 13kDa Observed: 15 kDa

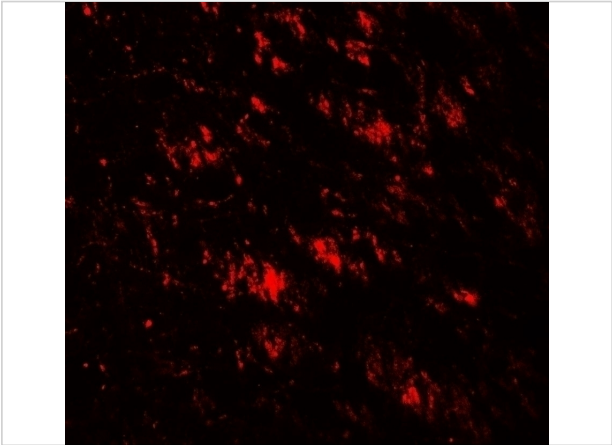
Properties

Purification	GABARAP Antibody is affinity chromatography purified via peptide column.
Clonality	Polyclonal
Isotype	IgG
Physical State	Liquid
Buffer	GABARAP Antibody is supplied in PBS containing 0.02% sodium azide.
Concentration	1 mg/mL
Storage Conditions	GABARAP antibody can be stored at 4°C for three months and -20°C, stable for up to one year.



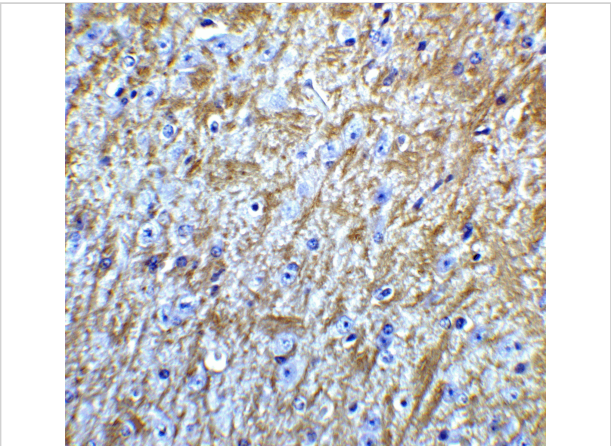
GABARAP Antibody 1

Western blot analysis of GABARAP in HeLa cell lysate with GABARAP antibody at 1 µg/ml.



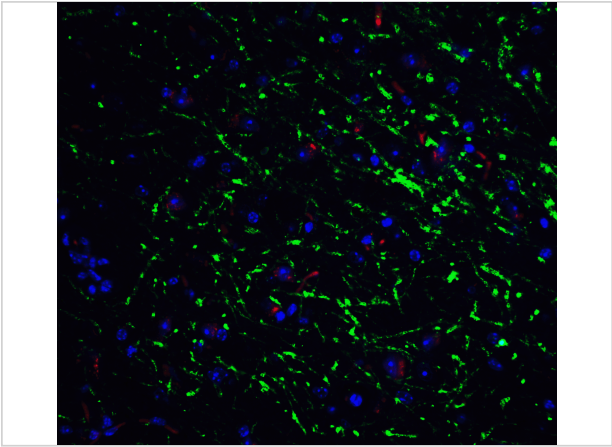
GABARAP Antibody 2

Immunofluorescence of GABARAP in human brain tissue with GABARAP antibody at 20 µg/ml.



GABARAP Antibody 3

Immunohistochemistry of GABARAP in mouse brain tissue with GABARAP Antibody at 5 µg/mL.



GABARAP Antibody 4

Immunofluorescence of GABARAP in mouse brain tissue with GABARAP Antibody at 20 µg/mL.

Green: GABARAP antibody (7359)
Red: Phylloidin staining
Blue: DAPI staining

Disclaimer

Disclaimer	Optimal dilutions/concentrations should be determined by the end user. The information provided is a guideline for product use. This product is for research use only.
------------	------------------------------------------------------------------------------------------------------------------------------------------------------------------------

For research use only. For additional information, visit ProSci's [Terms and Conditions Page](#).