

IL-27 Antibody

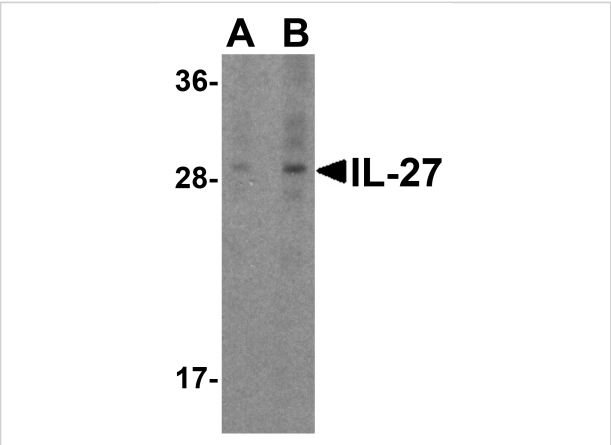
CATALOG NUMBER: 3797

Specifications

Host Species	Rabbit
Species Reactivity	Human, Mouse
Homology	Predicted species reactivity based on immunogen sequence: Rat: (63%)
Immunogen	Anti-IL-27 antibody (3797) was raised against a peptide corresponding to 16 amino acids near the amino terminus of human IL-27. The immunogen is located within the first 50 amino acids of IL-27.
Conjugate	Unconjugated
Tested Applications	ELISA, ICC, WB
User Note	Optimal dilutions for each application to be determined by the researcher.
Predicted Molecular Weight	Predicted: 28 kDa Observed: 28 kDa

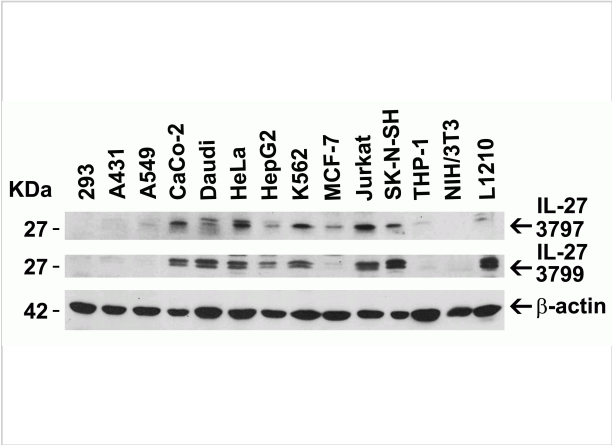
Properties

Purification	IL-27 Antibody is affinity chromatography purified via peptide column.
Clonality	Polyclonal
Isotype	IgG
Physical State	Liquid
Buffer	IL-27 Antibody is supplied in PBS containing 0.02% sodium azide.
Concentration	1 mg/mL
Storage Conditions	IL-27 antibody can be stored at 4°C for three months and -20°C, stable for up to one year. As with all antibodies care should be taken to avoid repeated freeze thaw cycles. Antibodies should not be exposed to prolonged high temperatures.



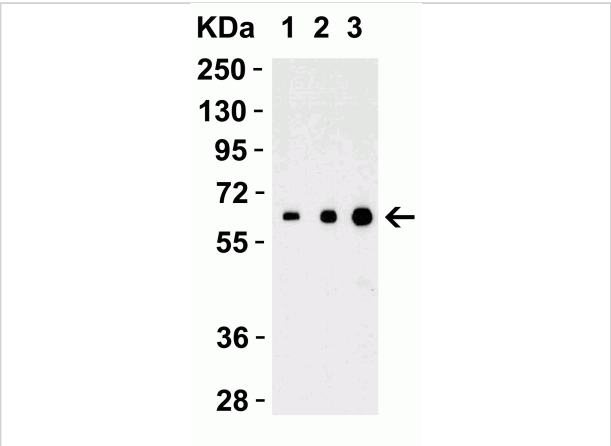
IL-27 Antibody 1

Figure 1 Western Blot Validation in Mouse A20 Cells
 Loading: 15 µg of lysates per lane. Antibodies: IL-27 3797, (A: 1 µg/mL, B: 2 µg/mL), 1h incubation at RT in 5% NFDM/TBST. Sec...



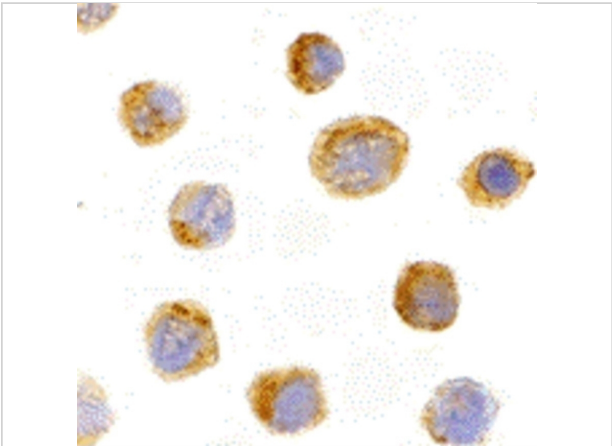
IL-27 Antibody 2

Figure 2 Independent Antibody Validation (IAV) via Protein Expression Profile in Cell Lines
 Loading: 15 µg of lysates per lane. Antibodies: IL-27 3797 (4 µg/mL), IL-27 3799 (4 µg...



IL-27 Antibody 3

Figure 3 Recombinant Protein Validation
 Loading: 30 ng of human recombinant IL-17 (IL-17A+IL-17B) protein per lane. Antibodies: IL-27 3797, 1h incubation at RT in 5% NFDM/TBST.S...



IL-27 Antibody 4

Figure 4 Immunocytochemistry Validation of IL-27 in Mouse EL4 Cells
 Immunocytochemical analysis of Mouse EL4 cells using anti-IL-27 antibody (3797) at 10 µg/ml. Cells was fixed ...

Disclaimer

Disclaimer	Optimal dilutions/concentrations should be determined by the end user. The information provided is a guideline for product use. This product is for research use only.
------------	--

For research use only. For additional information, visit ProSci's [Terms and Conditions Page](#).