

RNF20 Antibody

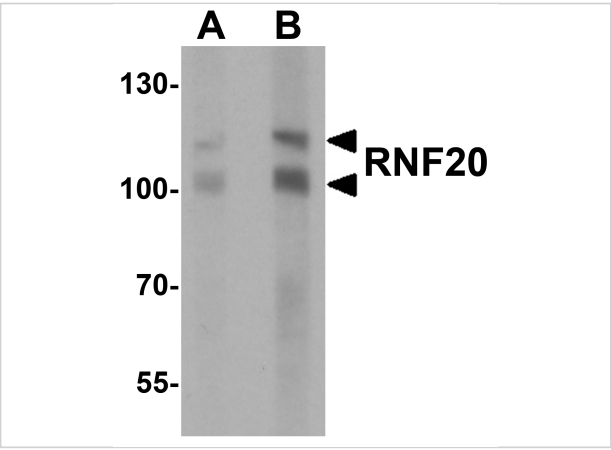
CATALOG NUMBER: 7357

Specifications

Host Species	Rabbit
Species Reactivity	Human, Mouse
Homology	Predicted species reactivity based on immunogen sequence: Bovine: (100%), Chicken: (89%)
Immunogen	RNF20 antibody was raised against a 19 amino acid peptide near the amino terminus of human RNF20. The immunogen is located within amino acids 130 - 180 of RNF20.
Conjugate	Unconjugated
Tested Applications	ELISA, IF, IHC-P, WB
User Note	Optimal dilutions for each application to be determined by the researcher.
Specificity	Multiple isoforms of RNF20 are known to exist.
Predicted Molecular Weight	Predicted: 99, 107 kDa Observed: 100, 110 kDa

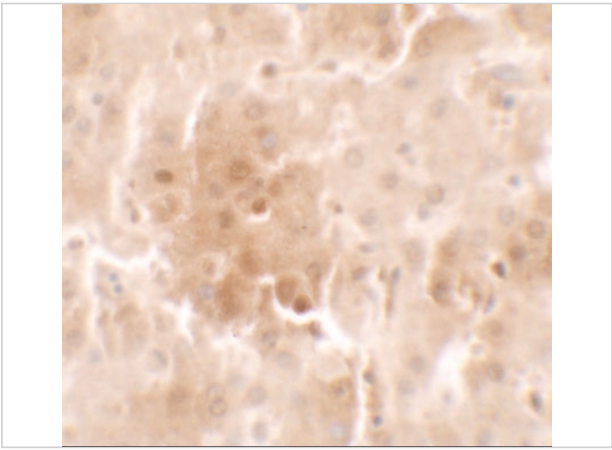
Properties

Purification	RNF20 Antibody is affinity chromatography purified via peptide column.
Clonality	Polyclonal
Isotype	IgG
Physical State	Liquid
Buffer	RNF20 Antibody is supplied in PBS containing 0.02% sodium azide.
Concentration	1 mg/mL
Storage Conditions	RNF20 antibody can be stored at 4°C for three months and -20°C, stable for up to one year.



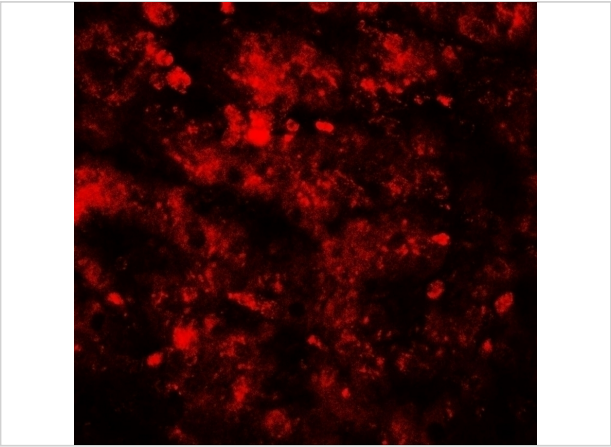
RNF20 Antibody 1

Western blot analysis of RNF20 in human liver tissue lysate with RNF20 antibody at (A) 1 and (B) 2 µg/mL.



RNF20 Antibody 2

Immunohistochemistry of RNF20 in human liver tissue with RNF20 antibody at 2.5 µg/mL.



RNF20 Antibody 3

Immunofluorescence of RNF20 in human liver tissue with RNF20 antibody at 20 µg/mL.

Disclaimer

Disclaimer	Optimal dilutions/concentrations should be determined by the end user. The information provided is a guideline for product use. This product is for research use only.
------------	--

For research use only. For additional information, visit ProSci's [Terms and Conditions Page](#).