

## DIS3 Antibody

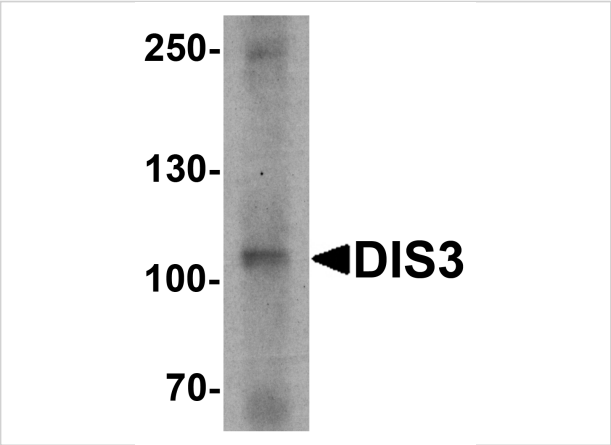
CATALOG NUMBER: 7343

### Specifications

Host Species	Rabbit
Species Reactivity	Human, Mouse, Rat
Immunogen	DIS3 antibody was raised against an 18 amino acid peptide near the amino terminus of human DIS3. The immunogen is located within amino acids 90 - 140 of DIS3.
Conjugate	Unconjugated
Tested Applications	ELISA, IF, IHC-P, WB
User Note	Optimal dilutions for each application to be determined by the researcher.
Specificity	Multiple isoforms of DIS3 are known to exist.
Predicted Molecular Weight	Predicted: 105 kDa Observed: 103 kDa

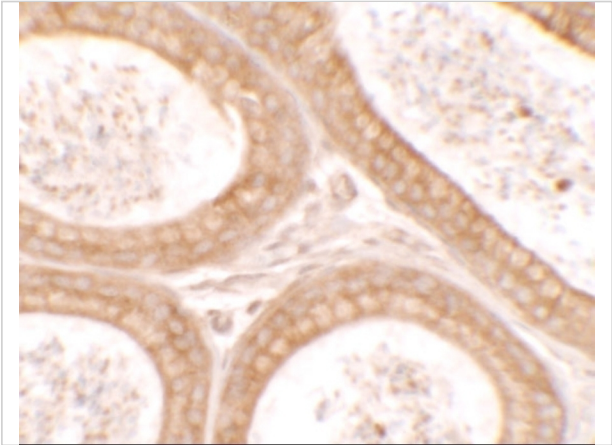
### Properties

Purification	DIS3 Antibody is affinity chromatography purified via peptide column.
Clonality	Polyclonal
Isotype	IgG
Physical State	Liquid
Buffer	DIS3 Antibody is supplied in PBS containing 0.02% sodium azide.
Concentration	1 mg/mL
Storage Conditions	DIS3 antibody can be stored at 4°C for three months and -20°C, stable for up to one year.



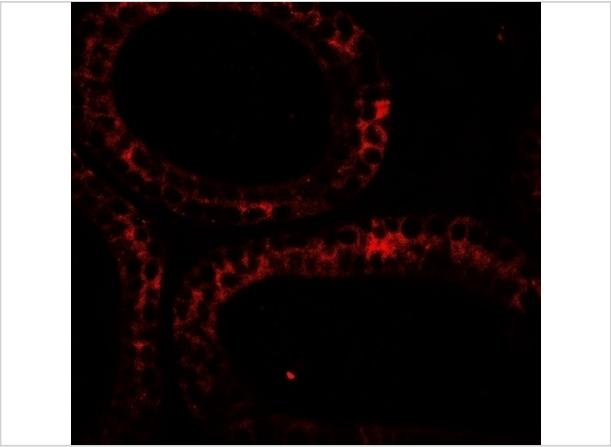
DIS3 Antibody 1

Western blot analysis of DIS3 in human ovary tissue lysate with DIS3 antibody at 1 µg/mL.



DIS3 Antibody 2

Immunohistochemistry of DIS3 in mouse testis tissue with DIS3 antibody at 2.5 µg/mL.



DIS3 Antibody 3

Immunofluorescence of DIS3 in mouse testis tissue with DIS3 antibody at 20 µg/mL.

Disclaimer

Disclaimer	Optimal dilutions/concentrations should be determined by the end user. The information provided is a guideline for product use. This product is for research use only.
------------	--

For research use only. For additional information, visit ProSci's [Terms and Conditions Page](#).