

## KAT5 Antibody

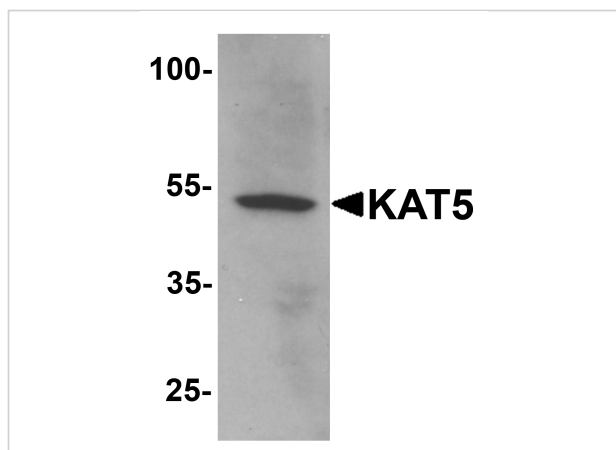
CATALOG NUMBER: 7339

### Specifications

Host Species	Rabbit
Species Reactivity	Human, Mouse, Rat
Immunogen	KAT5 antibody was raised against a 15 amino acid peptide near the carboxy terminus of human KAT5. The immunogen is located within the last 50 amino acids of KAT5.
Conjugate	Unconjugated
Tested Applications	ELISA, IF, IHC-P, WB
User Note	Optimal dilutions for each application to be determined by the researcher.
Specificity	Multiple isoforms of KAT5 are known to exist.
Predicted Molecular Weight	Predicted: 51, 54, 56, 60 kDa Observed: 53 kDa

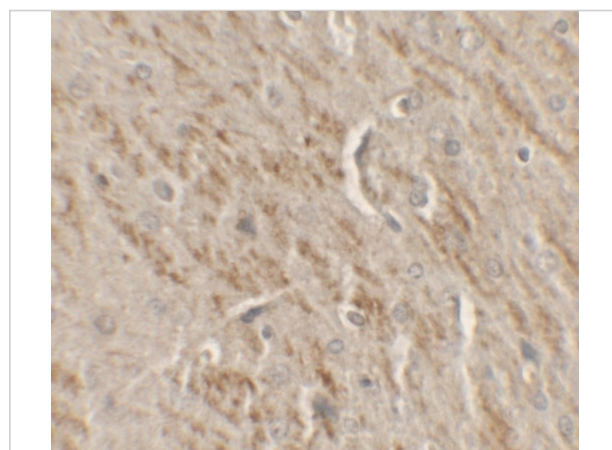
### Properties

Purification	KAT5 Antibody is affinity chromatography purified via peptide column.
Clonality	Polyclonal
Isotype	IgG
Physical State	Liquid
Buffer	KAT5 Antibody is supplied in PBS containing 0.02% sodium azide.
Concentration	1 mg/mL
Storage Conditions	KAT5 antibody can be stored at 4°C for three months and -20°C, stable for up to one year.



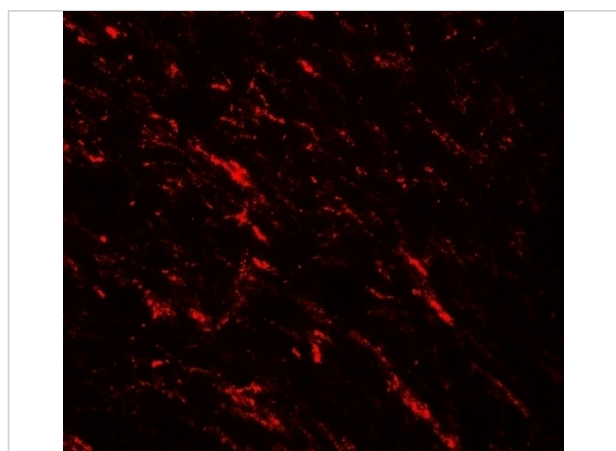
### KAT5 Antibody 1

Western blot analysis of KAT5 in human brain tissue lysate with KAT5 antibody at 1 µg/mL.



### KAT5 Antibody 2

Immunohistochemistry of KAT5 in rat brain tissue with KAT5 antibody at 2.5 µg/mL.



### KAT5 Antibody 3

Immunofluorescence of KAT5 in rat brain tissue with KAT5 antibody at 20 µg/mL.

## Disclaimer

#### Disclaimer

Optimal dilutions/concentrations should be determined by the end user. The information provided is a guideline for product use. This product is for research use only.

For research use only. For additional information, visit ProSci's [Terms and Conditions Page](#).