

IL-23 Antibody

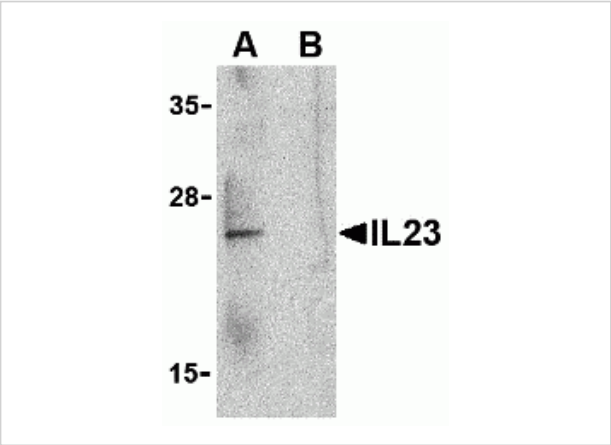
CATALOG NUMBER: 3793

Specifications

Host Species	Rabbit
Species Reactivity	Human
Homology	Predicted species reactivity based on immunogen sequence: Guinea pig: (93%), Horse: (93%), Mouse: (71%), Rat: (71%)
Immunogen	Anti-IL-23 antibody (3793) was raised against a peptide corresponding to 14 amino acids near the carboxy terminus of mature human IL-23. The immunogen is located the last 50 amino acids of IL-23.
Conjugate	Unconjugated
Tested Applications	ELISA, ICC, IF, IHC-P, WB
User Note	Optimal dilutions for each application to be determined by the researcher.
Predicted Molecular Weight	Predicted: 21kD Observed: 22 kD

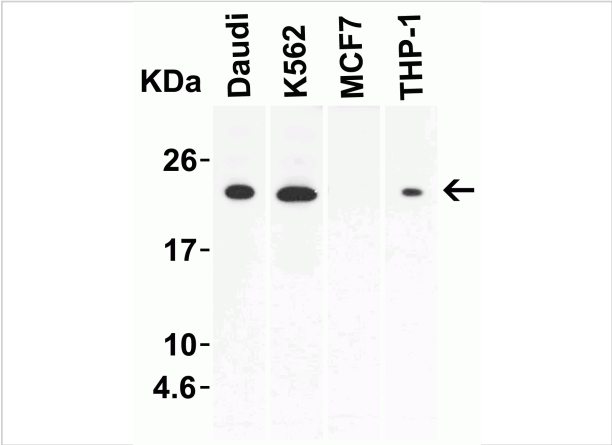
Properties

Purification	IL-23 Antibody is affinity chromatography purified via peptide column.
Clonality	Polyclonal
Isotype	IgG
Physical State	Liquid
Buffer	IL-23 Antibody is supplied in PBS containing 0.02% sodium azide.
Concentration	1 mg/mL
Storage Conditions	IL-23 antibody can be stored at 4°C for three months and -20°C, stable for up to one year. As with all antibodies care should be taken to avoid repeated freeze thaw cycles. Antibodies should not be exposed to prolonged high temperatures.



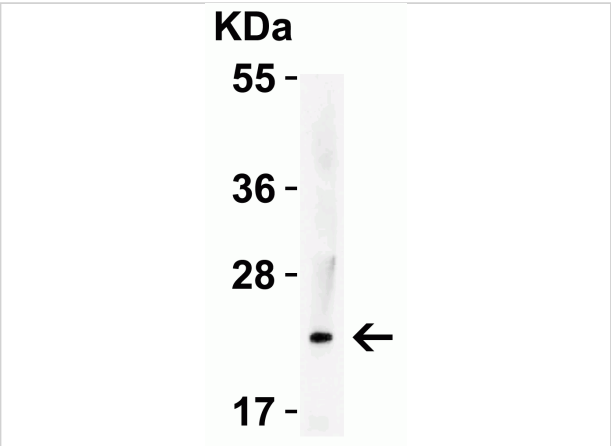
IL-23 Antibody 1

Figure 1 Western Blot Validation in Human Raji Cells
 Loading: 15 µg of lysates per lane. Antibodies: IL-23 3793 (1 µg/mL), 1h incubation at RT in 5% NFDm/TBST. Secondary: Goat ant...



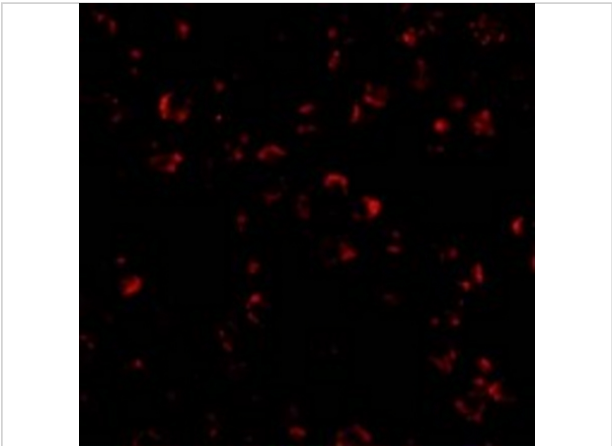
IL-23 Antibody 2

Figure 2 Western Blot Validation in Human Cell Lines
 Loading: 20 µg of lysates per lane. Antibodies: IL-23 3793, (2 µg/mL), 1h incubation at RT in 5% NFDm/TBST. Secondary: Goat an...



IL-23 Antibody 3

Figure 3 Western Blot Validation with Recombinant Protein
 Loading: 30 ng of human IL-23 recombinant protein. Antibodies: IL-23 3793 (4 µg/mL), 1h incubation at RT in 5% NFDm/TBST...



IL-23 Antibody 4

Figure 4 Immunofluorescence Validation of IL-23 in Raji Cells
 Immunofluorescent analysis of 4% paraformaldehyde-fixed Raji Cells labeling IL-23 with 3793 at 20 µg/mL, followed b...

Disclaimer

Disclaimer	Optimal dilutions/concentrations should be determined by the end user. The information provided is a guideline for product use. This product is for research use only.
------------	--

For research use only. For additional information, visit ProSci's [Terms and Conditions Page](#).