

KANK1 Antibody

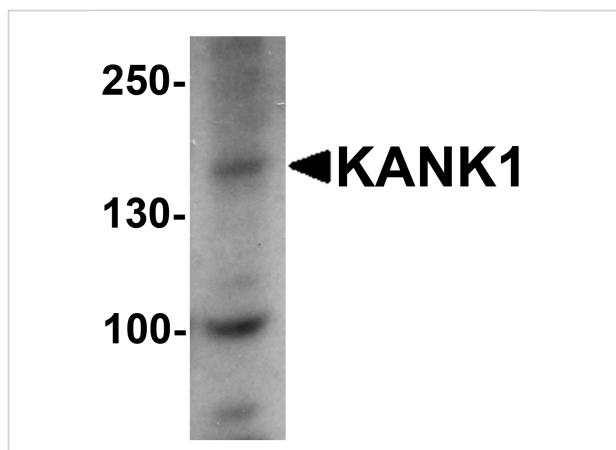
CATALOG NUMBER: 7307

Specifications

Host Species	Rabbit
Species Reactivity	Human, Mouse
Immunogen	KANK1 antibody was raised against a 19 amino acid peptide near the amino terminus of human KANK1 . The immunogen is located within the first 50 amino acids of KANK1.
Conjugate	Unconjugated
Tested Applications	ELISA, IF, IHC-P, WB
User Note	Optimal dilutions for each application to be determined by the researcher.
Specificity	Two alternatively spliced transcript variants encoding different isoforms have been identified. The lower molecular weight band seen in the immunoblot is thought to be non-specific.
Predicted Molecular Weight	Predicted: 149 kDa Observed: 150 kDa

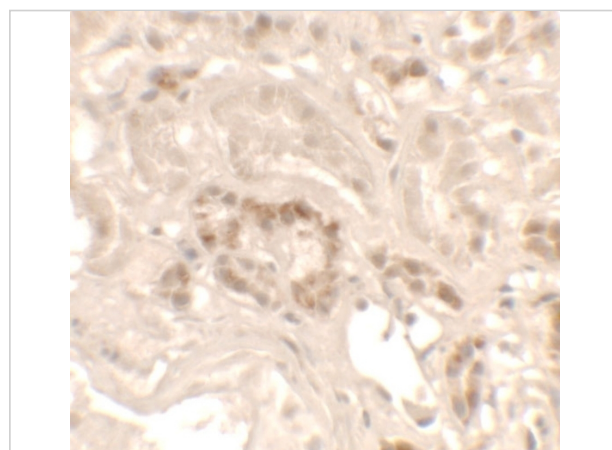
Properties

Purification	KANK1 Antibody is affinity chromatography purified via peptide column.
Clonality	Polyclonal
Isotype	IgG
Physical State	Liquid
Buffer	KANK1 Antibody is supplied in PBS containing 0.02% sodium azide.
Concentration	1 mg/mL
Storage Conditions	KANK1 antibody can be stored at 4°C up to one year. Antibodies should not be exposed to prolonged high temperatures.



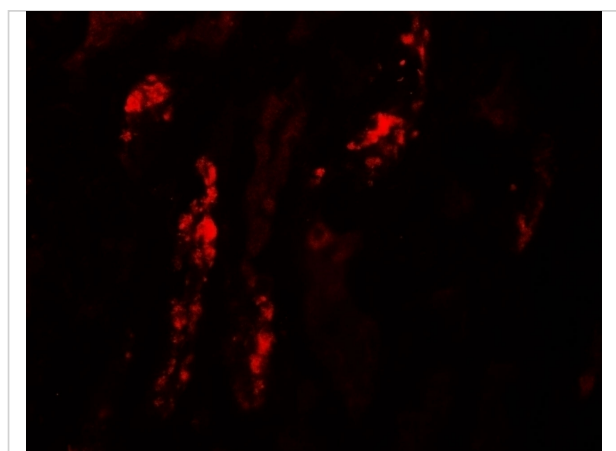
KANK1 Antibody 1

Western blot analysis of KANK1 in 3T3 cell lysate with KANK1 antibody at 1 µg/mL.



KANK1 Antibody 2

Immunohistochemistry of KANK1 in human kidney tissue with KANK1 antibody at 2.5 µg/mL.



KANK1 Antibody 3

Immunofluorescence of KANK1 in human kidney tissue with KANK1 antibody at 20 µg/mL.

Disclaimer

Disclaimer

Optimal dilutions/concentrations should be determined by the end user. The information provided is a guideline for product use. This product is for research use only.

For research use only. For additional information, visit ProSci's [Terms and Conditions Page](#).