

GAPDH Antibody

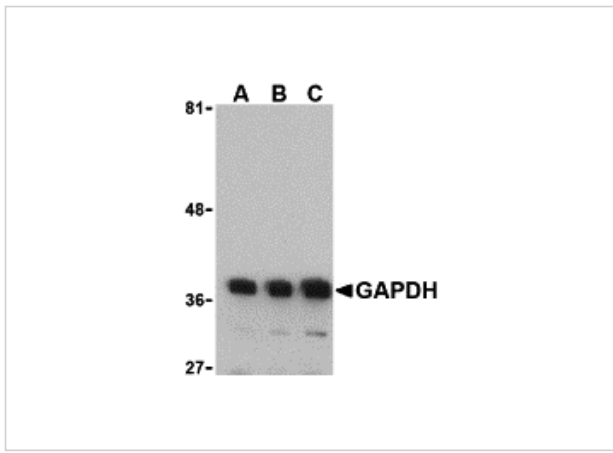
CATALOG NUMBER: 3783

Specifications

Host Species	Rabbit
Species Reactivity	Human, Mouse, Rat
Homology	Predicted species reactivity based on immunogen sequence: Sheep: (87%), Rabbit: (87%), Pig: (87%), Bovine: (87%), Chicken: (87%)
Immunogen	GAPDH antibody was raised against a 16 amino acid synthetic peptide from near the amino-terminus of human GAPDH. The immunogen is located within amino acids 60 - 110 of GAPDH.
Conjugate	Unconjugated
Tested Applications	ELISA, IF, IHC-P, WB
User Note	Optimal dilutions for each application to be determined by the researcher.

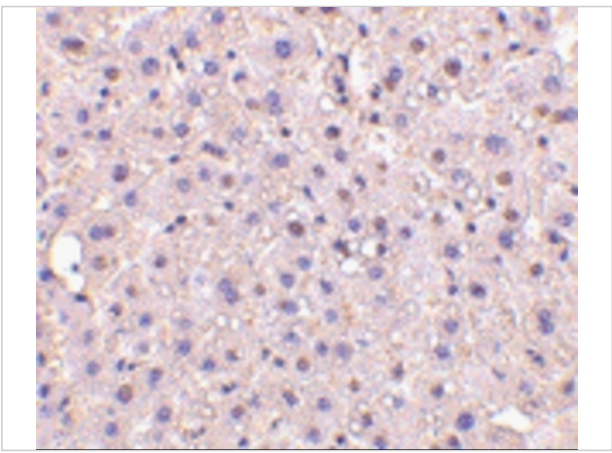
Properties

Purification	GAPDH Antibody is affinity chromatography purified via peptide column.
Clonality	Polyclonal
Isotype	IgG
Physical State	Liquid
Buffer	GAPDH Antibody is supplied in PBS containing 0.02% sodium azide.
Concentration	1 mg/mL
Storage Conditions	GAPDH antibody can be stored at 4°C up to one year. Antibodies should not be exposed to prolonged high temperatures.



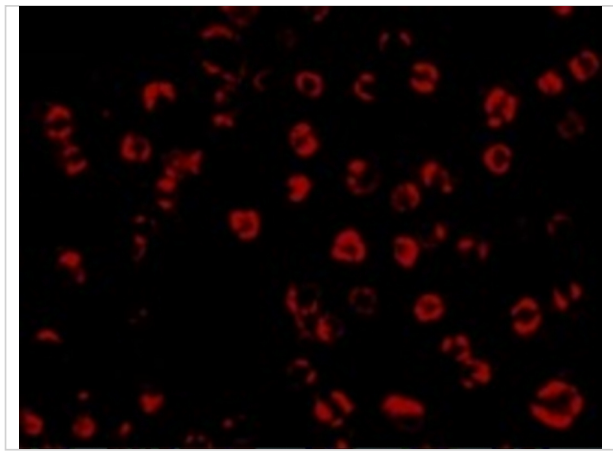
GAPDH Antibody 1

Western blot analysis of GAPDH in HeLa cell lysate with GAPDH antibody at (A) 0.125, (B) 0.25 and (C) 0.5 $\mu\text{g/mL}$.



GAPDH Antibody 2

Immunohistochemistry of GAPDH in human liver tissue with GAPDH antibody at 10 $\mu\text{g/mL}$.



GAPDH Antibody 3

Immunofluorescence of GAPDH in HeLa cells with GAPDH antibody at 10 $\mu\text{g/mL}$.

Disclaimer

Disclaimer	Optimal dilutions/concentrations should be determined by the end user. The information provided is a guideline for product use. This product is for research use only.
------------	--

For research use only. For additional information, visit ProSci's [Terms and Conditions Page](#).