

SHISA3 Antibody

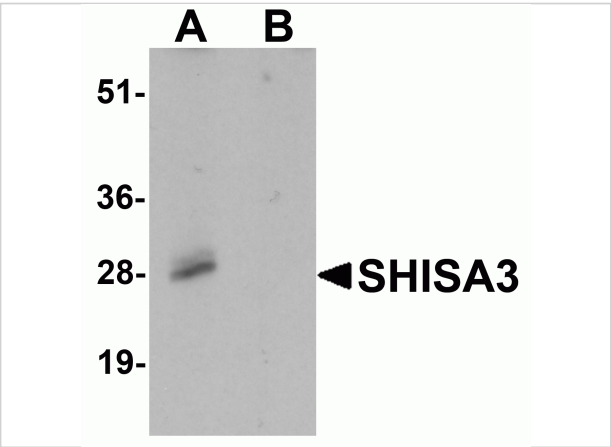
CATALOG NUMBER: 7275

Specifications

Host Species	Rabbit
Species Reactivity	Human, Mouse, Rat
Immunogen	SHISA3 antibody was raised against a 15 amino acid peptide near the center of human SHISA3 . The immunogen is located within amino acids 120 - 170 of SHISA3.
Conjugate	Unconjugated
Tested Applications	ELISA, IF, IHC-P, WB
User Note	Optimal dilutions for each application to be determined by the researcher.
Specificity	SHISA3 antibody is predicted to not cross-react with other SHISA protein family members.
Predicted Molecular Weight	Predicted: 26 kDa Observed: 28 kDa

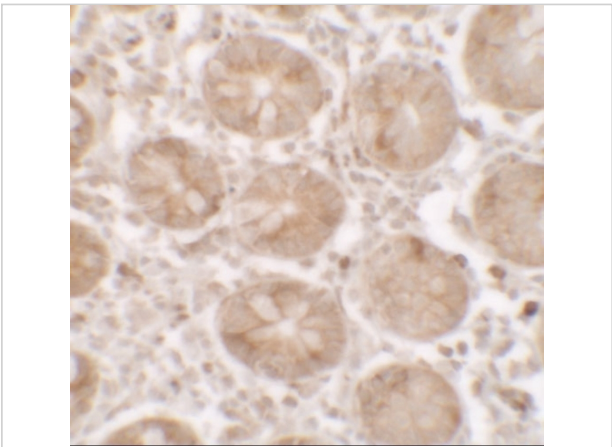
Properties

Purification	SHISA3 Antibody is affinity chromatography purified via peptide column.
Clonality	Polyclonal
Isotype	IgG
Physical State	Liquid
Buffer	SHISA3 Antibody is supplied in PBS containing 0.02% sodium azide.
Concentration	1 mg/mL
Storage Conditions	SHISA3 antibody can be stored at 4°C for three months and -20°C, stable for up to one year.



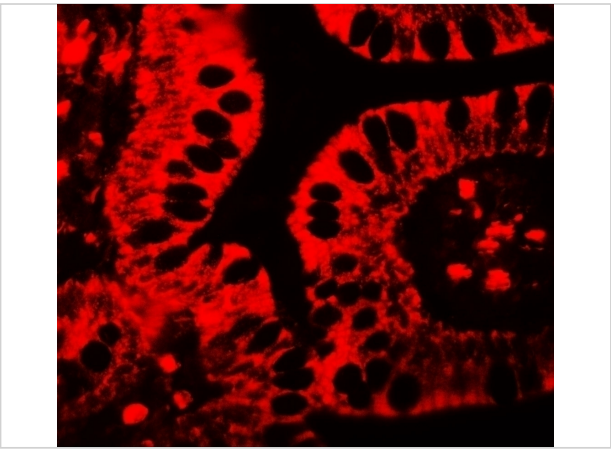
SHISA3 Antibody 1

Western blot analysis of SHISA3 in human small intestine Tissue lysate with SHISA3 antibody at 1 µg/mL in (A) the absence and (B) the presence of blocking peptide.



SHISA3 Antibody 2

Immunohistochemistry of SHISA3 in human small intestine tissue with SHISA3 antibody at 2.5 µg/mL.



SHISA3 Antibody 3

Immunofluorescence of SHISA3 in human small intestine tissue with SHISA3 antibody at 20 µg/mL.

Disclaimer

Disclaimer	Optimal dilutions/concentrations should be determined by the end user. The information provided is a guideline for product use. This product is for research use only.
------------	--

For research use only. For additional information, visit ProSci's [Terms and Conditions Page](#).