



ProSci Incorporated
12170 Flint Place
Poway, CA 92064, USA
prosci-inc.com

P: +1 (888) 513-9525
Local: +1 (858) 513-2638
Fax: +1 (858) 513-2692

customercare@prosci-inc.com
techsupport@prosci-inc.com

Nucleobindin-2 Antibody

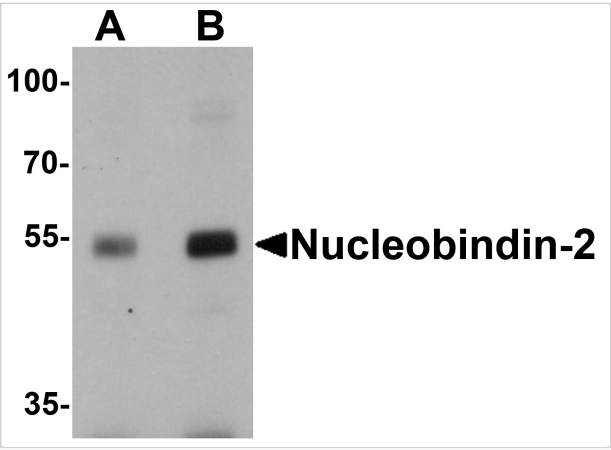
CATALOG NUMBER: 7271

Specifications

Host Species	Rabbit
Species Reactivity	Human, Mouse, Rat
Homology	Predicted species reactivity based on immunogen sequence: Bovine: (94%)
Immunogen	Nucleobindin-2 antibody was raised against a 16 amino acid peptide near the center of human Nucleobindin-2 . The immunogen is located within amino acids 260 - 310 of Nucleobindin-2.
Conjugate	Unconjugated
Tested Applications	ELISA, IF, IHC-P, WB
User Note	Optimal dilutions for each application to be determined by the researcher.
Specificity	Nucleobindin-2 antibody is predicted to not cross-react with NUCB1.
Predicted Molecular Weight	Predicted: 46 kDa Observed: 54 kDa

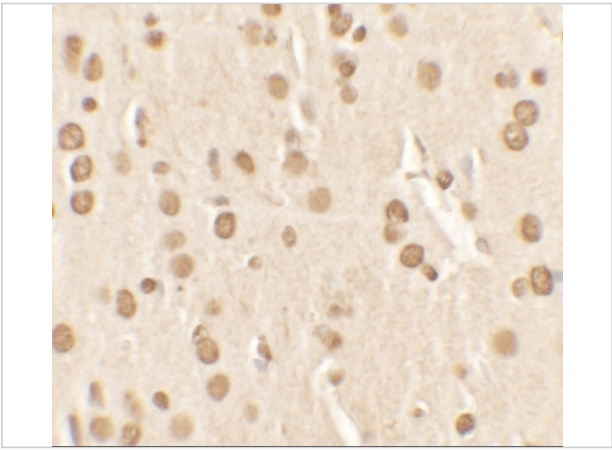
Properties

Purification	Nucleobindin-2 Antibody is affinity chromatography purified via peptide column.
Clonality	Polyclonal
Isotype	IgG
Physical State	Liquid
Buffer	Nucleobindin-2 Antibody is supplied in PBS containing 0.02% sodium azide.
Concentration	1 mg/mL
Storage Conditions	Nucleobindin-2 antibody can be stored at 4°C for three months and -20°C, stable for up to one year.



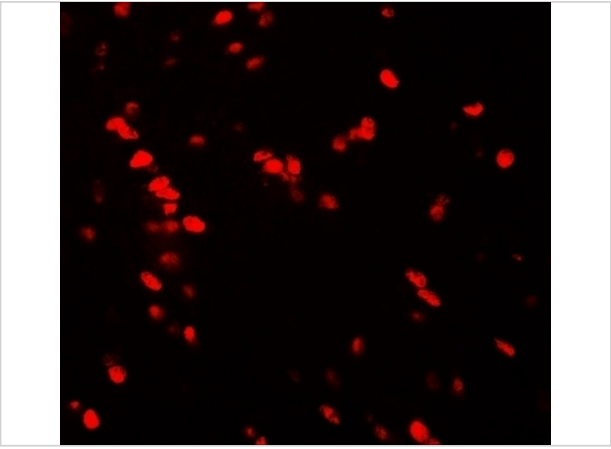
Nucleobindin-2 Antibody 1

Western blot analysis of Nucleobindin-2 in rat brain tissue lysate with Nucleobindin-2 antibody at (A) 0.5 and (B) 1 $\mu\text{g/mL}$.



Nucleobindin-2 Antibody 2

Immunohistochemistry of Nucleobindin-2 in rat brain tissue with Nucleobindin-2 antibody at 2.5 $\mu\text{g/mL}$.



Nucleobindin-2 Antibody 3

Immunofluorescence of Nucleobindin-2 in rat brain tissue with Nucleobindin-2 antibody at 20 $\mu\text{g/mL}$.

Disclaimer

Disclaimer	Optimal dilutions/concentrations should be determined by the end user. The information provided is a guideline for product use. This product is for research use only.
------------	--

For research use only. For additional information, visit ProSci's [Terms and Conditions Page](#).