

AGR2 Antibody

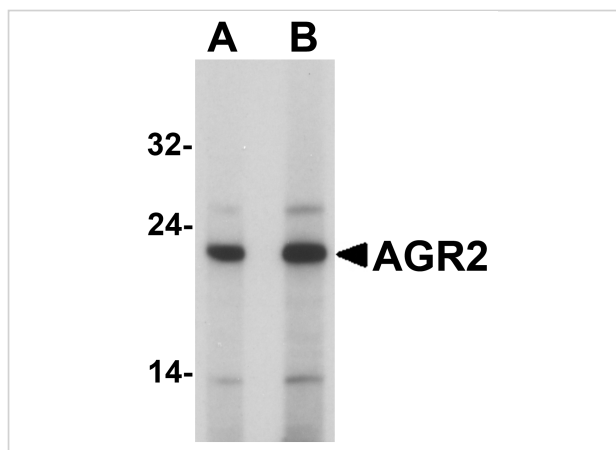
CATALOG NUMBER: 7247

Specifications

Host Species	Rabbit
Species Reactivity	Human, Mouse
Immunogen	Rabbit polyclonal AGR2 antibody was raised against a 17 amino acid peptide near the amino terminus of human AGR2. The immunogen is located within the first 50 amino acids of AGR2.
Conjugate	Unconjugated
Tested Applications	ELISA, IF, IHC-P, WB
User Note	Optimal dilutions for each application to be determined by the researcher.
Specificity	Two isoforms of AGR2 exists as a result of alternative splicing event.
Predicted Molecular Weight	19 kDa

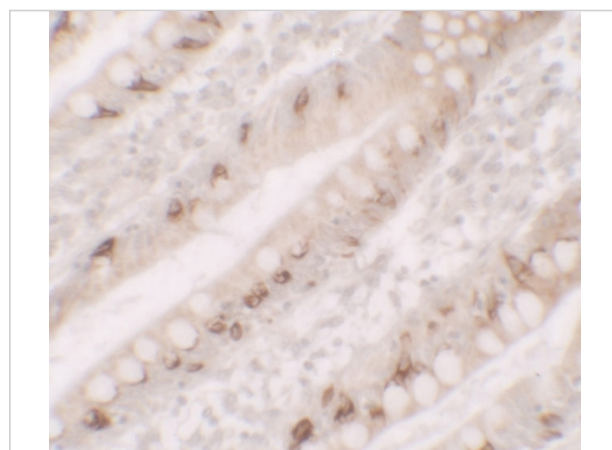
Properties

Purification	AGR2 Antibody is affinity chromatography purified via peptide column.
Clonality	Polyclonal
Isotype	IgG
Physical State	Liquid
Buffer	AGR2 Antibody is supplied in PBS containing 0.02% sodium azide.
Concentration	1 mg/mL
Storage Conditions	AGR2 antibody can be stored at 4°C for three months and -20°C, stable for up to one year.



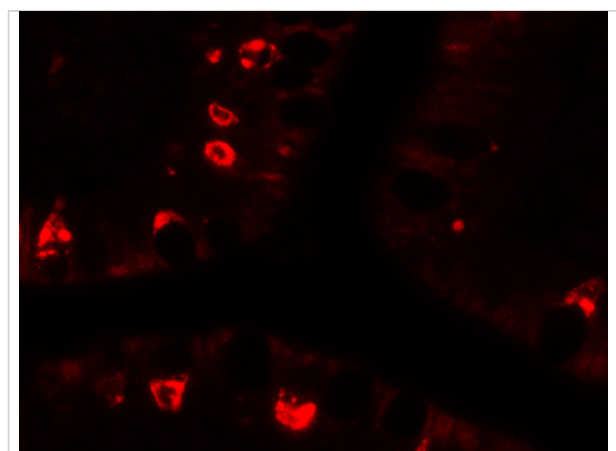
AGR2 Antibody 1

Western blot analysis of AGR2 in Hela cell lysate with AGR2 antibody at (A) 1 and (B) 2 µg/mL



AGR2 Antibody 2

Immunohistochemistry of AGR2 in human small intestine tissue with AGR2 antibody at 5 µg/mL.



AGR2 Antibody 3

Immunofluorescence of AGR2 in human small intestine tissue with AGR2 antibody at 20 µg/mL.

Disclaimer

Disclaimer

Optimal dilutions/concentrations should be determined by the end user. The information provided is a guideline for product use. This product is for research use only.

For research use only. For additional information, visit ProSci's [Terms and Conditions Page](#).