

## TREM1 Antibody

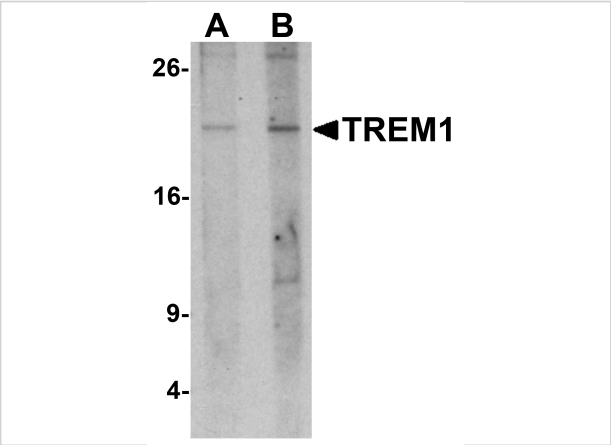
CATALOG NUMBER: 7185

### Specifications

|                            |   |
|----------------------------|---|
| Host Species               | Rabbit  |
| Species Reactivity         | Human   |
| Homology                   | Predicted species reactivity based on immunogen sequence: Mouse: (71%)  |
| Immunogen                  | Rabbit polyclonal TREM1 antibody was raised against a 17 amino acid peptide near the amino terminus of human TREM1.<br>The immunogen is located within the first 50 amino acids of TREM1. |
| Conjugate                  | Unconjugated  |
| Tested Applications        | ELISA, WB   |
| User Note                  | Optimal dilutions for each application to be determined by the researcher.  |
| Predicted Molecular Weight | Predicted: 26 kDa   |

### Properties

|                    |  |
|--------------------|--|
| Purification       | TREM1 Antibody is affinity chromatography purified via peptide column.   |
| Clonality          | Polyclonal   |
| Isotype            | IgG  |
| Physical State     | Liquid   |
| Buffer             | TREM1 Antibody is supplied in PBS containing 0.02% sodium azide.   |
| Concentration      | 1 mg/mL  |
| Storage Conditions | TREM1 antibody can be stored at 4°C up to one year. Antibodies should not be exposed to prolonged high temperatures. |



TREM1 Antibody 1

Western blot analysis of TREM1 in 293 cell lysate with TREM1 antibody at (A) 1 and (B) 2 µg/mL.

Disclaimer

|            |  |
|------------|--|
| Disclaimer | Optimal dilutions/concentrations should be determined by the end user. The information provided is a guideline for product use. This product is for research use only. |
|------------|--|

For research use only. For additional information, visit ProSci's [Terms and Conditions Page](#).