

DHX36 Antibody

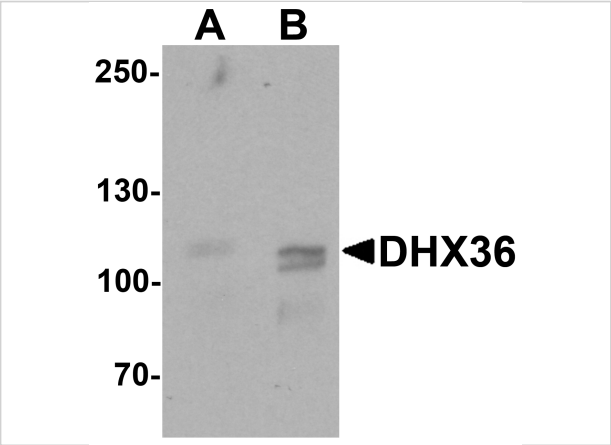
CATALOG NUMBER: 7163

Specifications

Host Species	Rabbit
Species Reactivity	Human, Mouse
Immunogen	Rabbit polyclonal DHX36 antibody was raised against a 19 amino acid peptide near the carboxy terminus of human DHX36. The immunogen is located within the last 50 amino acids of DHX36.
Conjugate	Unconjugated
Tested Applications	ELISA, IHC-P, WB
User Note	Optimal dilutions for each application to be determined by the researcher.
Specificity	At least four isoforms of DDX36 are known to exist; this antibody will detect the three longest isoforms.
Predicted Molecular Weight	Predicted: 111 kDa

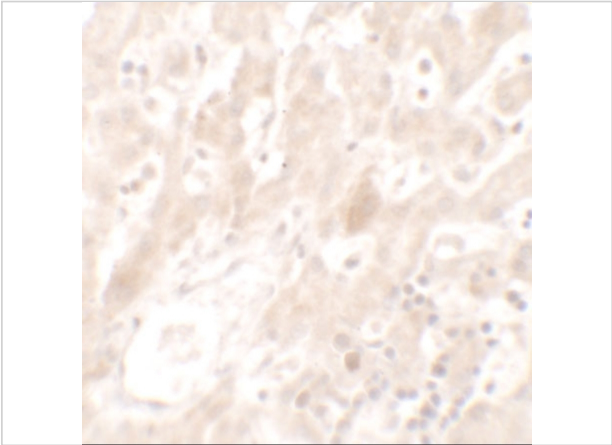
Properties

Purification	DHX36 Antibody is affinity chromatography purified via peptide column.
Clonality	Polyclonal
Isotype	IgG
Physical State	Liquid
Buffer	DHX36 Antibody is supplied in PBS containing 0.02% sodium azide.
Concentration	1 mg/mL
Storage Conditions	DHX36 antibody can be stored at 4°C for three months and -20°C, stable for up to one year.



DHX36 Antibody 1

Western blot analysis of DHX36 in mouse liver tissue lysate with DHX36 antibody at (A) 0.5 and (B) 1 µg/mL.



DHX36 Antibody 2

Immunohistochemistry of DHX36 in human liver tissue with DHX36 antibody at 5 µg/mL.

Disclaimer

Disclaimer	Optimal dilutions/concentrations should be determined by the end user. The information provided is a guideline for product use. This product is for research use only.
------------	--

For research use only. For additional information, visit ProSci's [Terms and Conditions Page](#).