

## CHCHD7 Antibody

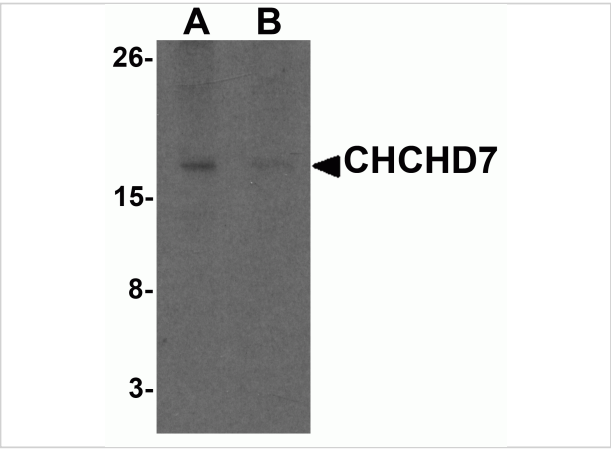
CATALOG NUMBER: 7143

### Specifications

Host Species	Rabbit
Species Reactivity	Human, Mouse, Rat
Homology	Predicted species reactivity based on immunogen sequence: Bovine: (71%)
Immunogen	Rabbit polyclonal CHCHD7 antibody was raised against a 15 amino acid peptide near the carboxy terminus of human CHCHD7. The immunogen is located within the last 50 amino acids of CHCHD7.
Conjugate	Unconjugated
Tested Applications	ELISA, WB
User Note	Optimal dilutions for each application to be determined by the researcher.
Specificity	Three alternatively spliced transcript variants have been observed. CHCHD7 is predicted to not cross-react to other members of the CHCHD family.
Predicted Molecular Weight	Predicted: 11 kDa

### Properties

Purification	CHCHD7 Antibody is affinity chromatography purified via peptide column.
Clonality	Polyclonal
Isotype	IgG
Physical State	Liquid
Buffer	CHCHD7 Antibody is supplied in PBS containing 0.02% sodium azide.
Concentration	1 mg/mL
Storage Conditions	CHCHD7 antibody can be stored at 4°C for three months and -20°C, stable for up to one year.



CHCHD7 Antibody 1

Western blot analysis of CHCHD7 in rat liver tissue lysate with CHCHD7 antibody at 1 µg/mL in (A) the absence and (B) the presence of blocking peptide.

Disclaimer

Disclaimer	Optimal dilutions/concentrations should be determined by the end user. The information provided is a guideline for product use. This product is for research use only.
------------	--

For research use only. For additional information, visit ProSci's [Terms and Conditions Page](#).