

## TSPY1L Antibody

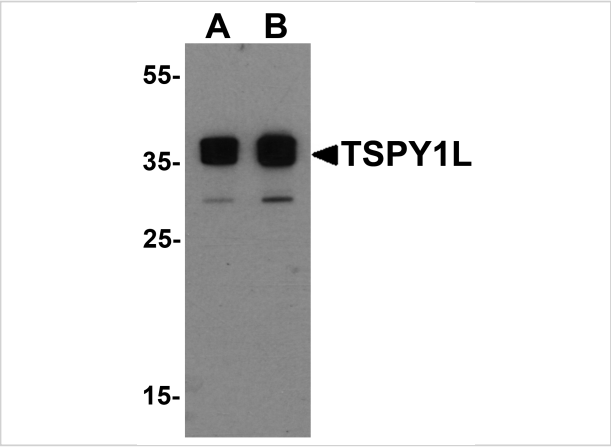
CATALOG NUMBER: 7121

### Specifications

Host Species	Rabbit
Species Reactivity	Human, Mouse
Immunogen	Rabbit polyclonal TSPY1L antibody was raised against a 20 amino acid peptide near the carboxy terminus of human TSPY1L. The immunogen is located within the last 50 amino acids of TSPY1L.
Conjugate	Unconjugated
Tested Applications	ELISA, WB
User Note	Optimal dilutions for each application to be determined by the researcher.
Specificity	TSPY1L antibody is human and mouse reactive. At least three isoforms of TSPY1 are known to exist; this antibody will detect only TSPY1L.
Predicted Molecular Weight	34 kDa

### Properties

Purification	TSPY1L Antibody is affinity chromatography purified via peptide column.
Clonality	Polyclonal
Isotype	IgG
Physical State	Liquid
Buffer	TSPY1L Antibody is supplied in PBS containing 0.02% sodium azide.
Concentration	1 mg/mL
Storage Conditions	TSPY1L antibody can be stored at 4°C for three months and -20°C, stable for up to one year. As with all antibodies care should be taken to avoid repeated freeze thaw cycles. Antibodies should not be exposed to prolonged high temperatures.



TSPY1L Antibody 1

Western blot analysis of TSPY1L in A20 cell lysate with TSPY1L antibody at (A) 0.5 and (B) 1 µg/mL

Disclaimer

Disclaimer	Optimal dilutions/concentrations should be determined by the end user. The information provided is a guideline for product use. This product is for research use only.
------------	--

For research use only. For additional information, visit ProSci's [Terms and Conditions Page](#).