

## SHROOM3 Antibody

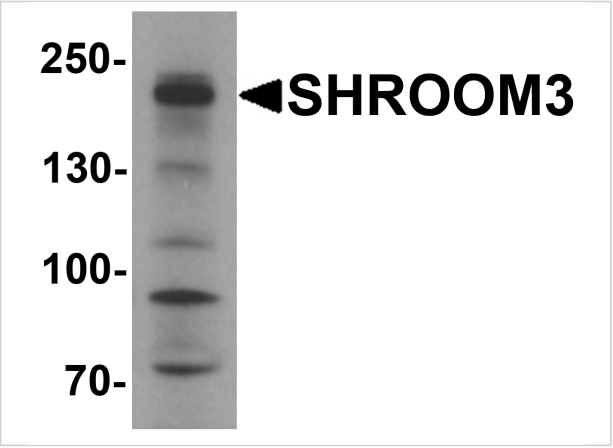
CATALOG NUMBER: 7117

### Specifications

Host Species	Rabbit
Species Reactivity	Human
Immunogen	Rabbit polyclonal SHROOM3 antibody was raised against an 18 amino acid peptide near the center of human SHROOM3. The immunogen is located within amino acids 850 - 900 of SHROOM3.
Conjugate	Unconjugated
Tested Applications	ELISA, WB
User Note	Optimal dilutions for each application to be determined by the researcher.
Specificity	SHROOM3 antibody is human specific. At least four isoforms of SHROOM3 are known to exist; this antibody will detect all four isoforms. SHROOM3 antibody is predicted to not cross-react with other SHROOM family members.
Predicted Molecular Weight	220 kDa

### Properties

Purification	SHROOM3 Antibody is affinity chromatography purified via peptide column.
Clonality	Polyclonal
Isotype	IgG
Physical State	Liquid
Buffer	SHROOM3 Antibody is supplied in PBS containing 0.02% sodium azide.
Concentration	1 mg/mL
Storage Conditions	SHROOM3 antibody can be stored at 4°C for three months and -20°C, stable for up to one year. As with all antibodies care should be taken to avoid repeated freeze thaw cycles. Antibodies should not be exposed to prolonged high temperatures.



SHROOM3 Antibody 1

Western blot analysis of SHROOM3 in SK-N-SH cell lysate with SHROOM3 antibody at 1 µg/mL.

Disclaimer

Disclaimer	Optimal dilutions/concentrations should be determined by the end user. The information provided is a guideline for product use. This product is for research use only.
------------	--

For research use only. For additional information, visit ProSci's [Terms and Conditions Page](#).