

SHROOM1 Antibody

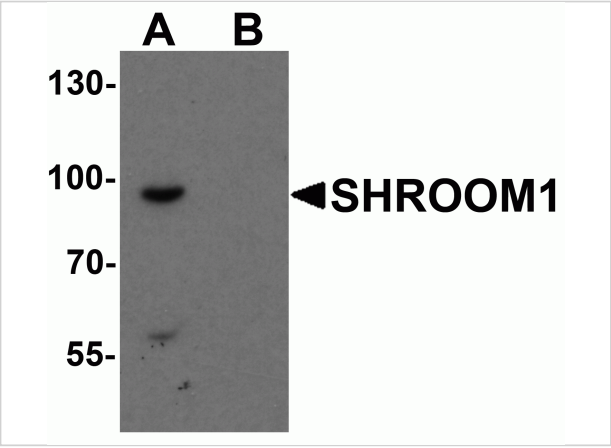
CATALOG NUMBER: 7113

Specifications

Host Species	Rabbit
Species Reactivity	Human, Mouse, Rat
Immunogen	Rabbit polyclonal SHROOM1 antibody was raised against a 16 amino acid peptide near the carboxy terminus of human SHROOM1. The immunogen is located within the last 50 amino acids of SHROOM1.
Conjugate	Unconjugated
Tested Applications	ELISA, WB
User Note	Optimal dilutions for each application to be determined by the researcher.
Specificity	SHROOM1 antibody is human, mouse and rat reactive. At least three isoforms of SHROOM1 are known to exist; this antibody will detect only the two largest isoforms. SHROOM1 antibody is predicted to not cross-react with other SHROOM family members.
Predicted Molecular Weight	94 kDa

Properties

Purification	SHROOM1 Antibody is affinity chromatography purified via peptide column.
Clonality	Polyclonal
Isotype	IgG
Physical State	Liquid
Buffer	SHROOM1 Antibody is supplied in PBS containing 0.02% sodium azide.
Concentration	1 mg/mL
Storage Conditions	SHROOM1 antibody can be stored at 4°C for three months and -20°C, stable for up to one year. As with all antibodies care should be taken to avoid repeated freeze thaw cycles. Antibodies should not be exposed to prolonged high temperatures.



SHROOM1 Antibody 1

Western blot analysis of SHROOM1 in mouse heart tissue lysate with SHROOM1 antibody at 1 µg/mL in (A) the absence and (B) the presence of blocking peptide.

Disclaimer

Disclaimer	Optimal dilutions/concentrations should be determined by the end user. The information provided is a guideline for product use. This product is for research use only.
------------	--

For research use only. For additional information, visit ProSci's [Terms and Conditions Page](#).