

PANX1 Antibody

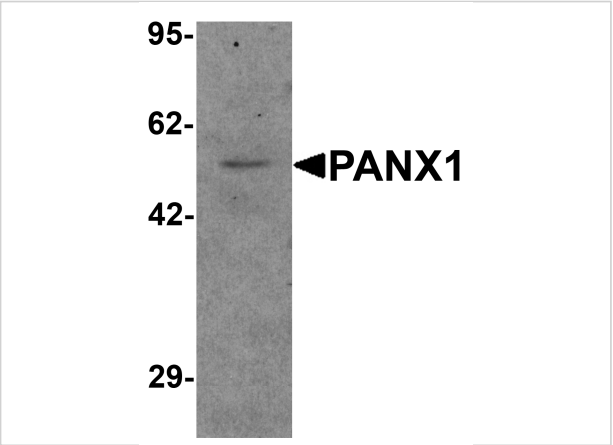
CATALOG NUMBER: 7097

Specifications

Host Species	Rabbit
Species Reactivity	Human, Mouse, Rat
Immunogen	Rabbit polyclonal PANX1 antibody was raised against a 17 amino acid peptide near the amino terminus of human PANX1. The immunogen is located within amino acids 70 - 120 of PANX1.
Conjugate	Unconjugated
Tested Applications	ELISA, IF, WB
User Note	Optimal dilutions for each application to be determined by the researcher.
Specificity	Two transcript variants encoding different isoforms have been found for this gene.
Predicted Molecular Weight	47 kDa

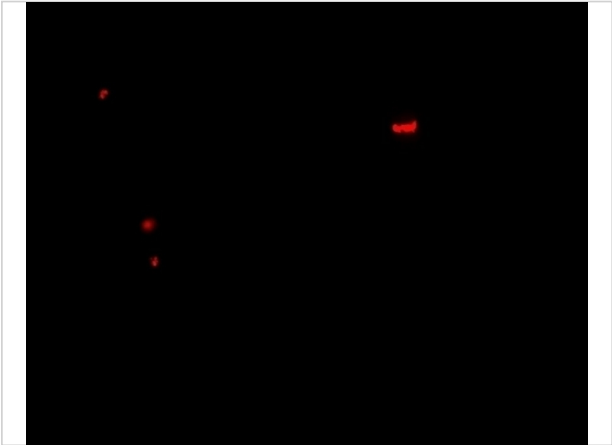
Properties

Purification	PANX1 Antibody is affinity chromatography purified via peptide column.
Clonality	Polyclonal
Isotype	IgG
Physical State	Liquid
Buffer	PANX1 Antibody is supplied in PBS containing 0.02% sodium azide.
Concentration	1 mg/mL
Storage Conditions	PANX1 antibody can be stored at 4°C for three months and -20°C, stable for up to one year. As with all antibodies care should be taken to avoid repeated freeze thaw cycles. Antibodies should not be exposed to prolonged high temperatures.



PANX1 Antibody 1

Western blot analysis of PANX1 in human ovary tissue lysate with PANX1 antibody at 1 µg/mL.



PANX1 Antibody 2

Immunofluorescence of PANX1 in human ovary tissue with PANX1 antibody at 20 µg/mL.

Disclaimer

Disclaimer	Optimal dilutions/concentrations should be determined by the end user. The information provided is a guideline for product use. This product is for research use only.
------------	--

For research use only. For additional information, visit ProSci's [Terms and Conditions Page](#).