

LMX1B Antibody

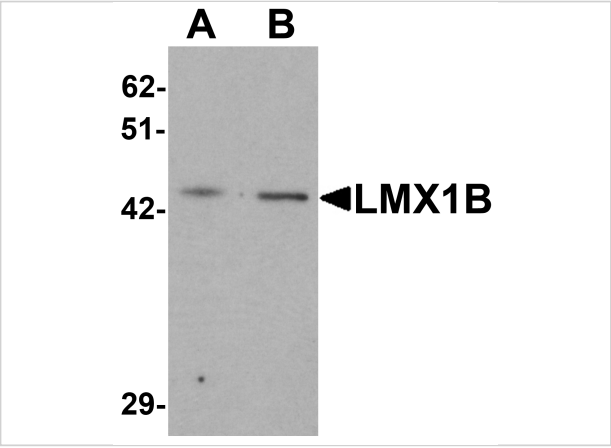
CATALOG NUMBER: 7089

Specifications

Host Species	Rabbit
Species Reactivity	Human, Mouse, Rat
Immunogen	Rabbit polyclonal LMX1B antibody was raised against a 17 amino acid peptide near the carboxy terminus of human LMX1B. The immunogen is located within amino acids 280 - 330 of LMX1B.
Conjugate	Unconjugated
Tested Applications	ELISA, WB
User Note	Optimal dilutions for each application to be determined by the researcher.
Specificity	At least three isoforms are known to exist. This antibody is predicted to not cross-react with LMX1A.
Predicted Molecular Weight	45 kDa

Properties

Purification	LMX1B Antibody is affinity chromatography purified via peptide column.
Clonality	Polyclonal
Isotype	IgG
Physical State	Liquid
Buffer	LMX1B Antibody is supplied in PBS containing 0.02% sodium azide.
Concentration	1 mg/mL
Storage Conditions	LMX1B antibody can be stored at 4°C for three months and -20°C, stable for up to one year. As with all antibodies care should be taken to avoid repeated freeze thaw cycles. Antibodies should not be exposed to prolonged high temperatures.



LMX1B Antibody 1

Western blot analysis of LMX1B in A-20 cell lysate with LMX1B antibody at (A) 1 and (B) 2 µg/mL.

Disclaimer

Disclaimer	Optimal dilutions/concentrations should be determined by the end user. The information provided is a guideline for product use. This product is for research use only.
------------	--

For research use only. For additional information, visit ProSci's [Terms and Conditions Page](#).