

## MYT1L Antibody

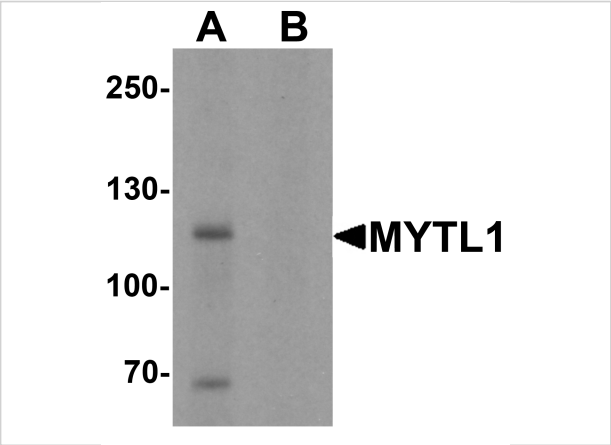
CATALOG NUMBER: 7083

### Specifications

Host Species	Rabbit
Species Reactivity	Human, Mouse, Rat
Immunogen	Rabbit polyclonal MYT1L antibody was raised against an 18 amino acid peptide near the carboxy terminus of human MYT1L. The immunogen is located within the last 50 amino acids of MYT1L.
Conjugate	Unconjugated
Tested Applications	ELISA, IF, WB
User Note	Optimal dilutions for each application to be determined by the researcher.
Specificity	At least three isoforms are known to exist. This antibody will only recognize the two longest isoforms.
Predicted Molecular Weight	130 kDa

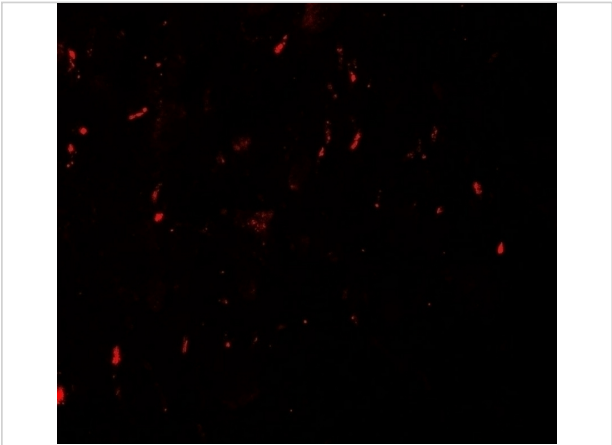
### Properties

Purification	MYT1L Antibody is affinity chromatography purified via peptide column.
Clonality	Polyclonal
Isotype	IgG
Physical State	Liquid
Buffer	MYT1L Antibody is supplied in PBS containing 0.02% sodium azide.
Concentration	1 mg/mL
Storage Conditions	MYT1L antibody can be stored at 4°C for three months and -20°C, stable for up to one year. As with all antibodies care should be taken to avoid repeated freeze thaw cycles. Antibodies should not be exposed to prolonged high temperatures.



MYT1L Antibody 1

Western blot analysis of MYT1L in mouse brain tissue lysate with MYT1L antibody at 1 µg/mL in (A) the absence and (B) the presence of blocking peptide.



MYT1L Antibody 2

Immunofluorescence of MYT1L in human brain with MYT1L antibody at 20 µg/mL.

Disclaimer

Disclaimer	Optimal dilutions/concentrations should be determined by the end user. The information provided is a guideline for product use. This product is for research use only.
------------	--

For research use only. For additional information, visit ProSci's [Terms and Conditions Page](#).