

SAMSN Antibody

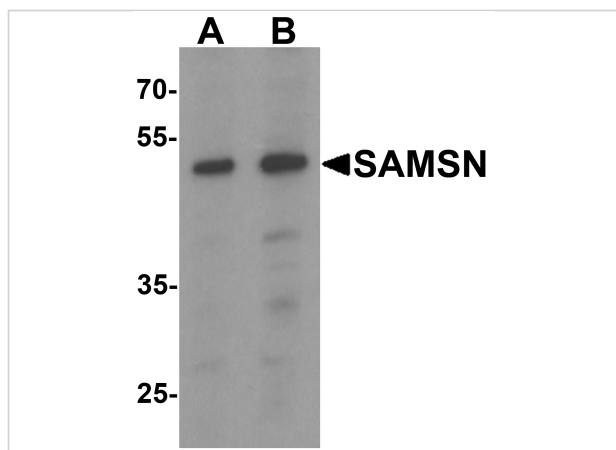
CATALOG NUMBER: 7079

Specifications

Host Species	Rabbit
Species Reactivity	Human
Homology	Predicted species reactivity based on immunogen sequence: Mouse: (94%)
Immunogen	Rabbit polyclonal SAMSN antibody was raised against an 18 amino acid peptide near the carboxy terminus of human SAMSN. The immunogen is located within the last 50 amino acids of SAMSN.
Conjugate	Unconjugated
Tested Applications	ELISA, ICC, IF, WB
User Note	Optimal dilutions for each application to be determined by the researcher.
Specificity	At least two isoforms of SAMSN are known to exist.
Predicted Molecular Weight	41 kDa

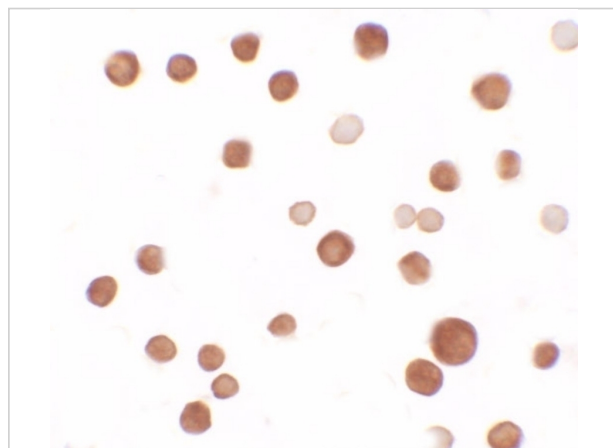
Properties

Purification	SAMSN Antibody is affinity chromatography purified via peptide column.
Clonality	Polyclonal
Isotype	IgG
Physical State	Liquid
Buffer	SAMSN Antibody is supplied in PBS containing 0.02% sodium azide.
Concentration	1 mg/mL
Storage Conditions	SAMSN antibody can be stored at 4°C for three months and -20°C, stable for up to one year. As with all antibodies care should be taken to avoid repeated freeze thaw cycles. Antibodies should not be exposed to prolonged high temperatures.



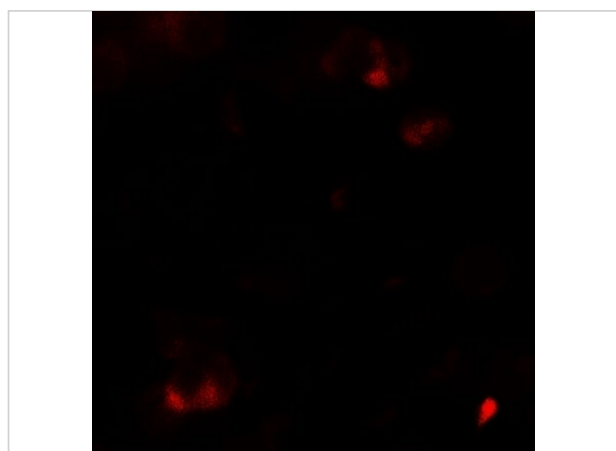
SAMS1 Antibody 1

Western blot analysis of SAMS1 in HeLa cell lysate with SAMS1 antibody at (A) 0.5 and (B) 1 $\mu\text{g/mL}$.



SAMS1 Antibody 2

Immunocytochemistry of SAMS1 in HeLa cells with SAMS1 antibody at 2.5 $\mu\text{g/mL}$.



SAMS1 Antibody 3

Immunofluorescence of SAMS1 in HeLa cells with SAMS1 antibody at 5 $\mu\text{g/mL}$.

Disclaimer

Disclaimer

Optimal dilutions/concentrations should be determined by the end user. The information provided is a guideline for product use. This product is for research use only.

For research use only. For additional information, visit ProSci's [Terms and Conditions Page](#).